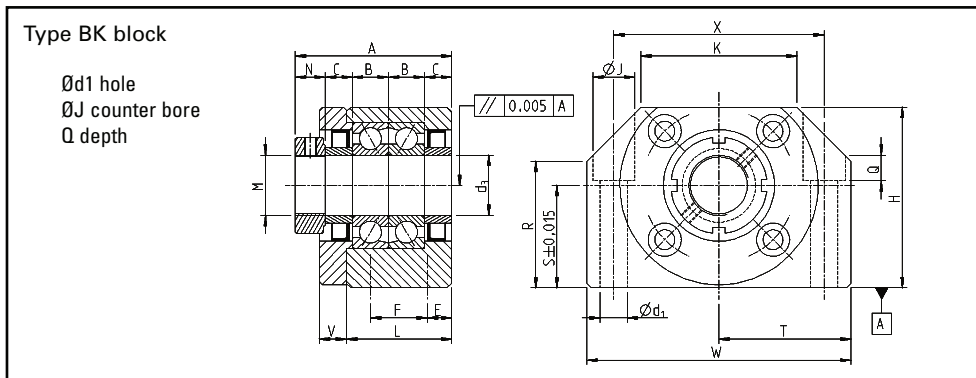
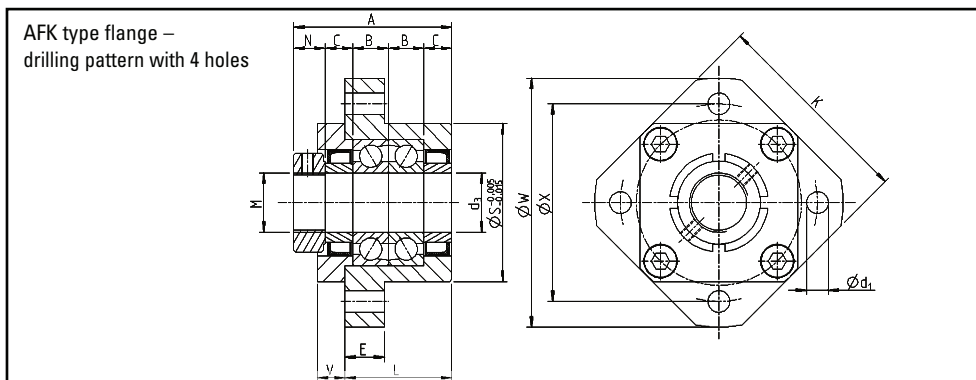


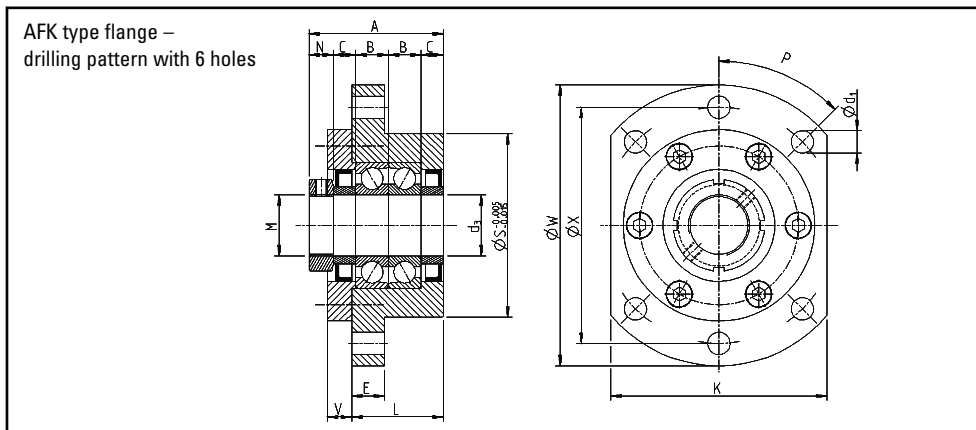
Bearing units for ball screws - fixed bearing



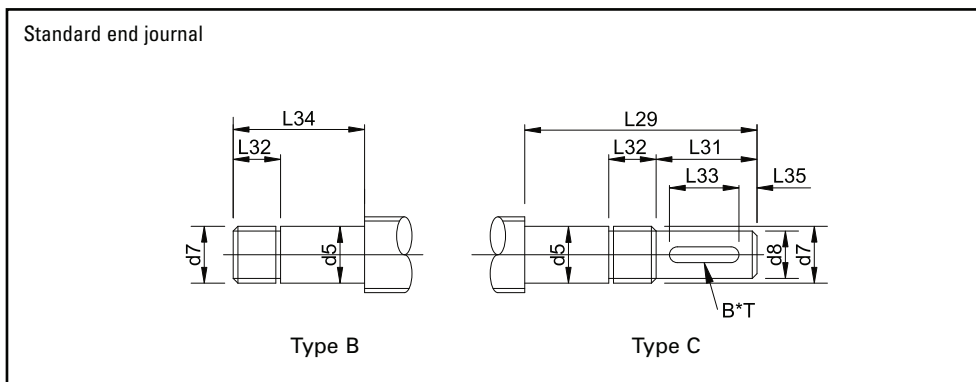
Part number	W (mm)	H (mm)	S (mm)
BK 8	52	32	17
BK 10	60	39	22
BK 12	60	43	25
BK 15	70	48	28
BK 17	86	64	39
BK 20	88	60	34
BK 25	106	80	48
BK 30	128	89	51
BK 40	160	110	60



Part number	W (mm)	X (mm)	S (mm)
AFK 8	43	35	28
AFK 10	52	42	34
AFK 12	54	44	36
AFK 15	63	50	40
AFK 20	85	70	57



Part number	W (mm)	X (mm)	S (mm)
AFK 25	122	100	80
AFK 30	138	116	90
AFK 40	176	150	120



d_0 (mm)	d_5 / h_6 (mm)	d_7 (mm)
12	8	M8x1.0
16	10	M10x1.0
16	12	M12x1.0
20	15	M15x1.0
25	17	M17x1.0
25	20	M20x1.0
32	25	M25x1.5
40	30	M30x1.5
50	40	M40x1.5

Dimensions												
R (mm)	T (mm)	X (mm)	K (mm)	d ₁ (mm)	J (mm)	Q (mm)	M (mm)	L (mm)	A (mm)	E (mm)	F (mm)	V (mm)
18.5	26	38	25	6.6	11	6.5	M8x1.0	23	33	11.5		5
26	30	46	34	6.6	11	6.5	M10x1.0	25	38	6	13	6
30	30	46	34	6.6	11	6.5	M12x1.0	25	38	6	13	6
33	35	54	40	6.6	11	6.5	M15x1.0	27	40	6	15	7
46	43	68	50	9	14	8.5	M17x1.0	35	52	8	19	9
42	44	70	52	9	14	8.5	M20x1.0	35	52	8	19	9
59	53	85	64	11	17.5	11	M25x1.5	42	65	10	22	11
63	64	102	76	14	20	13	M30x1.5	45	74	11	23	12
80	80	130	100	18	26	17.5	M40x1.5	61	93	14	33	14

Technical data		
Bearing type	Rated axial load (kN)	Maximum permissible load (kN)
EN8	1.64	1.48
7000A	6.70	2.78
7001A	7.25	3.10
7002A	7.75	4.07
7203A	14.00	5.95
7004A	12.95	9.70
7205A	20.60	11.70
7206B	28.60	16.60
7208B	45.00	27.70

Dimensions							
K (mm)	L (mm)	A (mm)	E (mm)	V (mm)	d ₁ (mm)	P (°)	M (mm)
35	21	30	7	5	3.4	90	M8x1.0
42	25	38	7	6	4.5	90	M10x1.0
44	25	38	8	6	4.5	90	M12x1.0
52	27	40	10	7	5.5	90	M15x1.0
68	37	52	15	7	6.6	90	M20x1.0

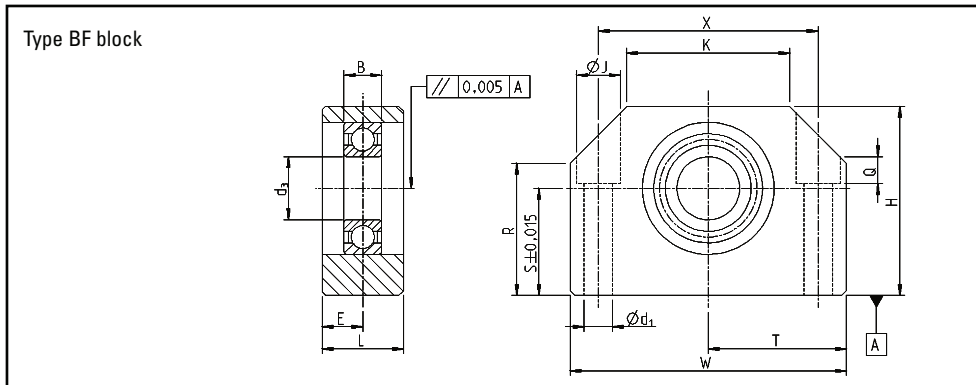
Technical data		
Bearing type	Rated axial load (kN)	Maximum permissible load (kN)
608	1.64	3.35
7000A	6.70	2.78
7001A	7.25	3.10
7002A	7.75	4.07
7204B	18.30	9.70

Dimensions							
K (mm)	L (mm)	A (mm)	E (mm)	V (mm)	d ₁ (mm)	P (°)	M (mm)
92	42	65	15	11	11	45	M25x1.5
106	45	74	16	12	11	45	M30x1.5
128	61	93	19	15	14	45	M40x1.5

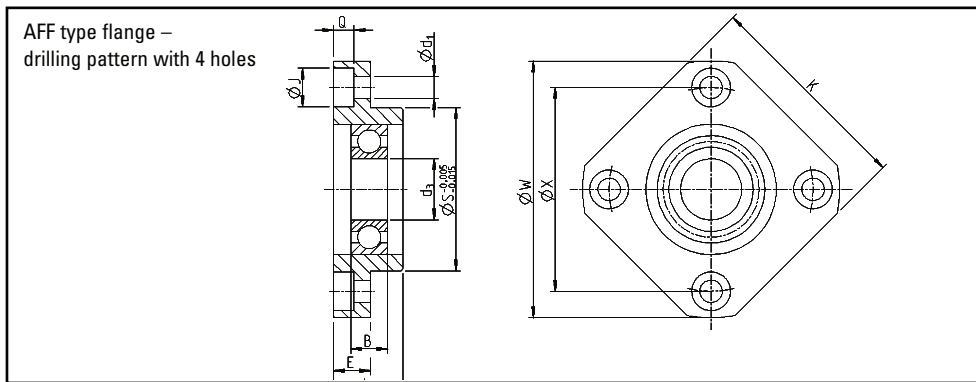
Technical data		
Bearing type	Rated axial load (kN)	Maximum permissible load (kN)
7205B	20.60	11.70
7206B	28.60	16.60
7208B	45.00	27.70

Dimensions									
d ₈ h ₇ (mm)	L ₂₉ (mm)	L ₃₁ (mm)	L ₃₂ (mm)	L ₃₄ (mm)	B P ₉ (mm)	T (mm)	L ₃₃ (mm)	L ₃₅ (mm)	Note
6	47/45	15	8	32/30	2	2.2	10	2.5	BK/AFK
8	58	20	10	38	3	1.8	15	2.5	
10	63	25	10	38	3	1.8	18	3.5	
14	77	35	12	42	4	2.5	27	4	
15	94	40	14	54	5	3	32	4.5	BK only
16	99	45	14	54	5	3	36	4.5	
20	120	55	17	65	6	3.5	45	5	
25	133	64	17	69	8	4	50	7	
36	165	78	21	87	10	5	63	7.5	

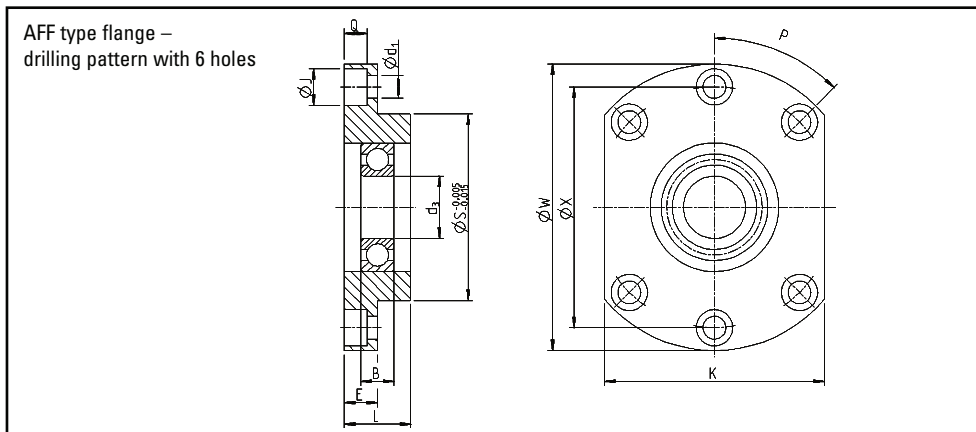
Bearing units for ball screws – loose bearing



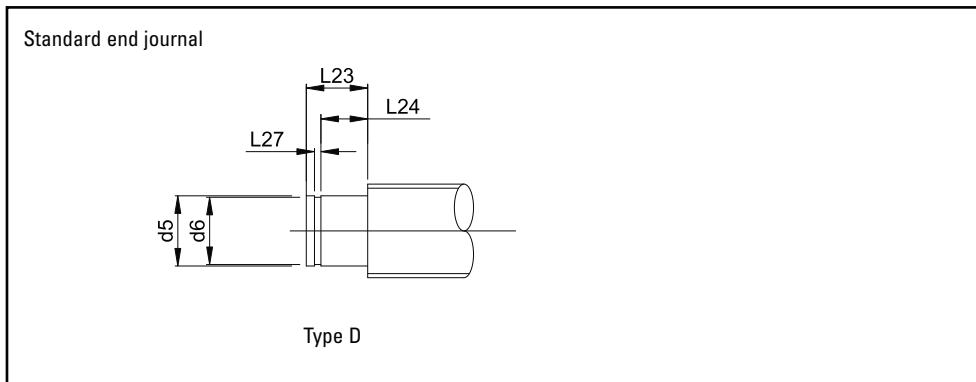
Part number	W (mm)	H (mm)	S (mm)
BF 8	52	32	17
BF 10	60	39	22
BF 12	60	43	25
BF 15	70	48	28
BF 17	86	64	39
BF 20	88	60	34
BF 25	106	80	48
BF 30	128	89	51
BF 40	160	110	60



Part number	W (mm)	X (mm)	S (mm)
AFF 8	43	35	28
AFF 10	52	42	34
AFF 12	54	44	36
AFF 15	63	50	40
AFF 20	85	70	57



Part number	W (mm)	X (mm)	S (mm)
AFF 25	122	100	80
AFF 30	138	116	90
AFF 40	176	150	120



d ₀ (mm)	d ₅ h6 (mm)	d ₆ h12 (mm)
12	8	7.6
16	10	11.5
16	12	11.5
20	15	14.0
25	17	19.0
25	20	19.0
32	25	23.9
40	30	28.6
50	40	37.5