

XYMR™ Microscope Stage



Features

- :: Super-thin cross section
- :: 3" diameter clear aperture for transmissive applications (solid top also available)
- :: Precision crossed-roller ways
- :: 6" x 6" travel
- :: High repeatability friction nuts

Microscope Stage

The Microscope Stage brings automated, highly accurate X-Y positioning to a wide range of microscope-based applications including wafer, mask, and die inspection; cell counting and analysis; video profilometry; etc. The Microscope Stage utilizes crossed roller ways and precision ground leadscrews with anti-backlash nuts, resulting in exceptional flatness, straightness, and linear positioning accuracy. This stage features the three-piece construction found in our XY and XYR Series, which machines orthogonality into

the center section; resulting in an extremely low profile. The stage body is only 1.2" thick, which, together with the large 3.00" clear aperture, permits the microscope stage to be used with closely spaced, high numerical aperture objectives and condensers. This stage is also available with a solid top. Locking DA-15 connectors for both axes are mounted to the same section, simplifying cabling. Note that since both motors are mounted to the center section, they both move when the lower axis moves.

SPECIFICATIONS		XTMR-8080	
Travel (mm)		6 x 6	
Leadscrew Accuracy, per axis (µm)		30	
Bidirectional Repeatability (µm)		1	
Flatness & Straightness per axis (µm)		10	
Orthogonality (arc-seconds)		30	
Pitch & Yaw (arc-seconds)		40	
Load Capacity (kg) ¹		10	
Maximum Leadscrew Speed (rps)		15	
Moving Mass (kg)	Upper Axis	1.1	
	Lower Axis	3.9	
Total Mass (kg)		5.0	

CONFIGURATIONS ²						
Leadscrew	Lead (inch)	0.50	0.40	0.20	0.10	0.02
	Lead (mm)	3	2	1.4		
Motor	Stepper (oz-in) 400 step/rev.	23	others available			
	200 step/rev.	44	others available			
	Servo	brush	brushless			

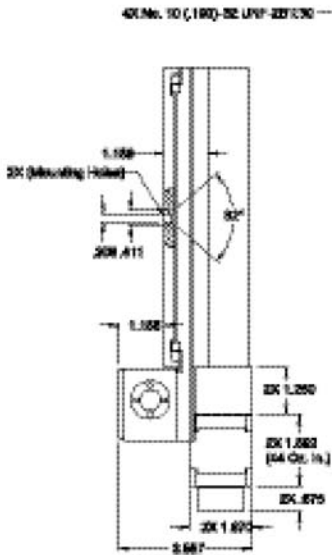
OPTIONS			
Encoder	Rotary (counts/rev.)	2000	4000
Solid Top			

¹Please contact our Applications Engineers for loads exceeding 5kg.

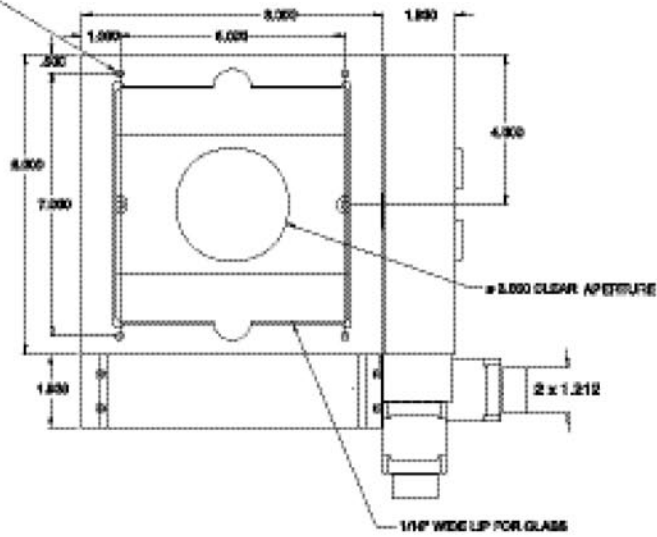
²Standard configuration is highlighted.

XYMR™ Microscope Stage

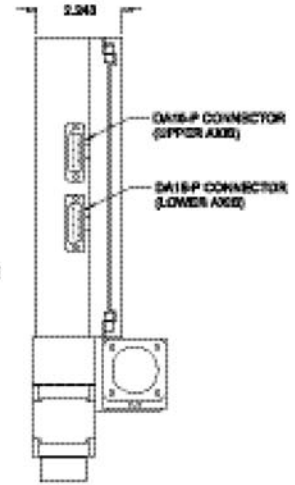
Left Side View



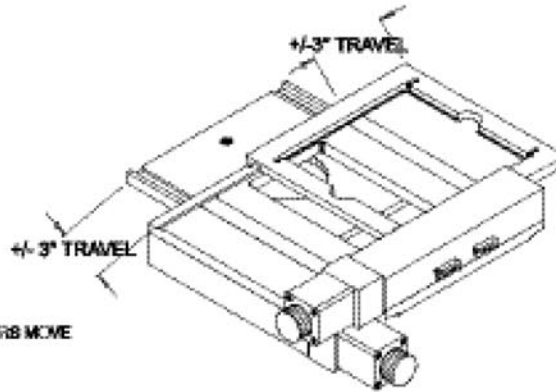
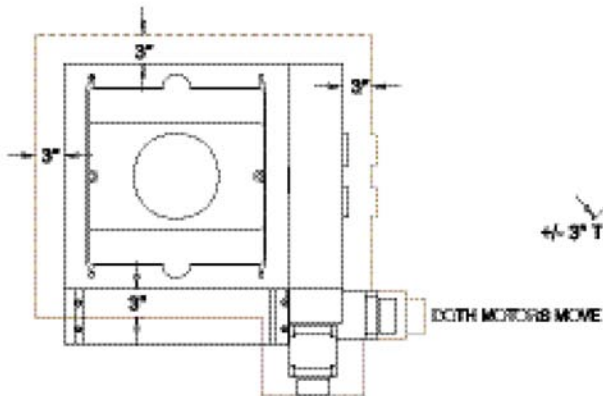
Top View



Right Side View



Moving Envelope



Third Angle Projection
Note: All Dimensions in Inches