

ZB

Belt Drive, Ball Guide

- » Ordering key - see page 217
- » Accessories - see page 137
- » Additional data - see page 194

General Specifications

Parameter	ZB
Profile size (w × h) [mm]	88 × 88
Type of belt	50 AT 10
Carriage sealing system	none
Adjustable belt tensioning	the belt can be retensioned by the customer if necessary
Lubrication	lubrication of drive station in two points
Included accessories	none

Performance Specifications

Parameter		ZB
Stroke length (S max), maximum	[mm]	2500
Linear speed, maximum	[m/s]	3,0
Acceleration, maximum	[m/s ²]	40
Repeatability	[± mm]	0,1
Input speed, maximum	[rpm]	900
Operation temperature limits	[°C]	-20 – 70
Dynamic load (Fz), maximum	[N]	500
Dynamic load torque (Mx), maximum	[Nm]	445 ¹ / 3340 ²
Dynamic load torque (My), maximum	[Nm]	445 ¹ / 3340 ²
Dynamic load torque (Mz), maximum	[Nm]	35 ¹ / 262 ²
Drive shaft force (Frd), maximum	[N]	600
Drive shaft torque (Mta), maximum	[Nm]	34
Pulley diameter	[mm]	63,66
Stroke per shaft revolution	[mm]	200
Weight of unit with zero stroke	[kg]	15,50
of every 100 mm of stroke		0,86
of the drive station box		16,20

¹ Value for the complete unit

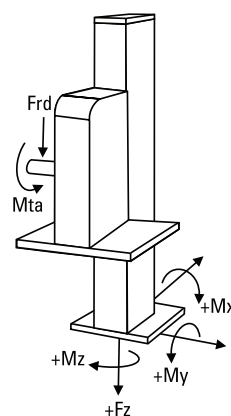
² Value for the ball guide only

Idle Torque, (M idle) [Nm]

Input speed [rpm]	Idle torque [Nm]
500	6,4

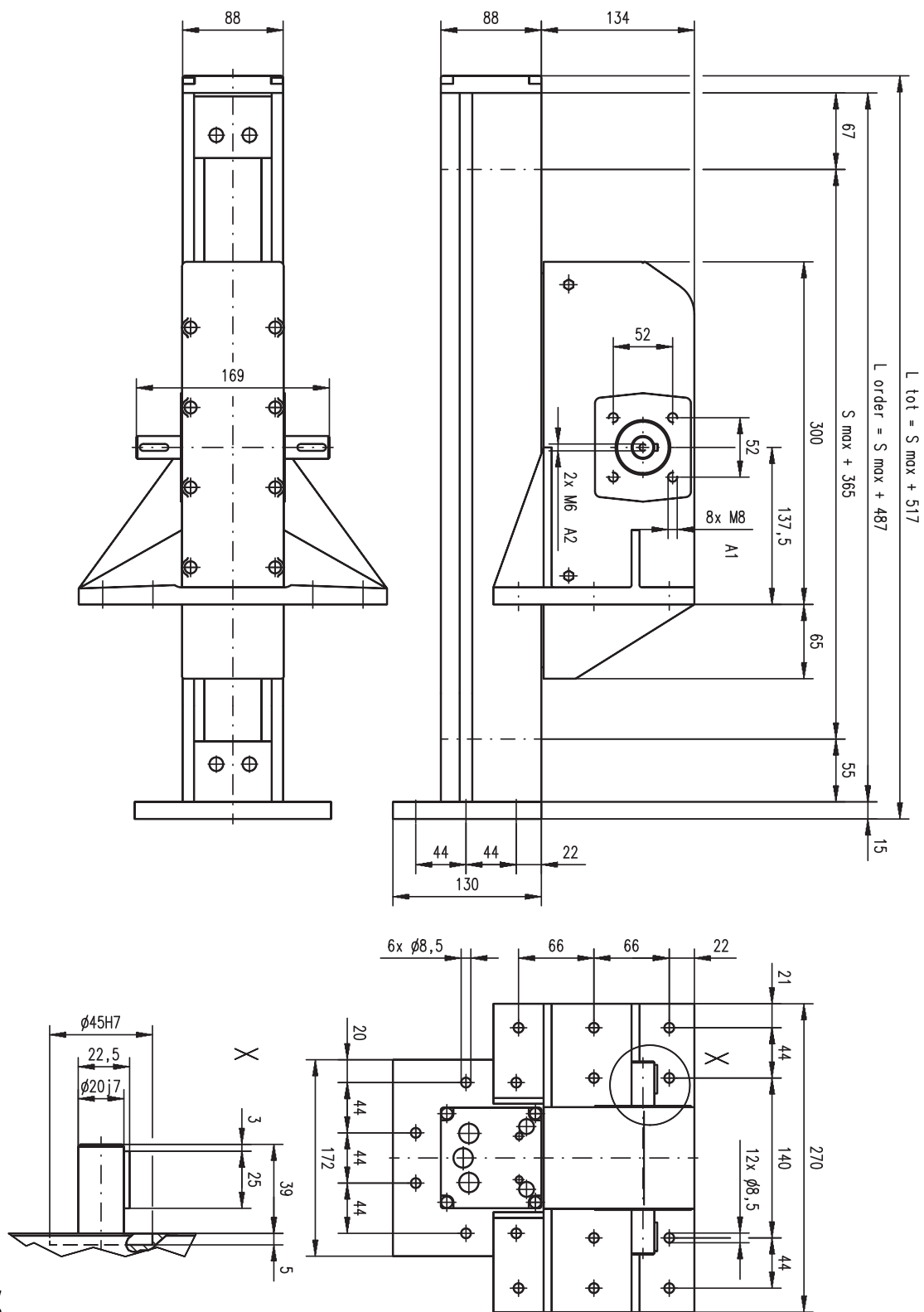
M idle = the input torque needed to move the lifting profile with no load on it.

Definition of Forces



ZB

Belt Drive, Ball Guide



A1: depth 17
A2: depth 20