

WHZ80

Belt Drive, Wheel Guide

- » Ordering key - see page 216
- » Accessories - see page 137
- » Additional data - see page 194

General Specifications

Parameter	WHZ80
Profile size (w × h) [mm]	80 × 80
Type of belt	32 ATL 5
Carriage sealing system	none
Adjustable belt tensioning	the belt can be retensioned by the customer if necessary
Lubrication	lubrication of carriage and guide surfaces
Included accessories	-

Performance Specifications

Parameter		WHZ80
Stroke length (S max), maximum	[mm]	3000
Linear speed, maximum	[m/s]	10,0
Acceleration, maximum	[m/s ²]	40
Repeatability	[± mm]	0,05
Input speed, maximum	[rpm]	3000
Operation temperature limits	[°C]	0 – 80
Dynamic load (Fx), maximum	[N]	1480 ³
Dynamic load (Fy), maximum	[N]	882 ¹ / 8160 ²
Dynamic load (Fz), maximum	[N]	2100 ¹ / 14680 ²
Dynamic load torque (Mx), maximum	[Nm]	75 ¹ / 480 ²
Dynamic load torque (My), maximum	[Nm]	230 ¹ / 1610 ²
Dynamic load torque (Mz), maximum	[Nm]	100 ¹ / 900 ²
Drive shaft force (Frd), maximum	[N]	500
Drive shaft torque (Mta), maximum	[Nm]	50
Pulley diameter	[mm]	63,66
Stroke per shaft revolution	[mm]	200
Weight	[kg]	
of unit with zero stroke		11,20
of every 100 mm of stroke		0,91
of each drive station box		6,65

¹ Value for the complete unit

² Value for the wheel guide only

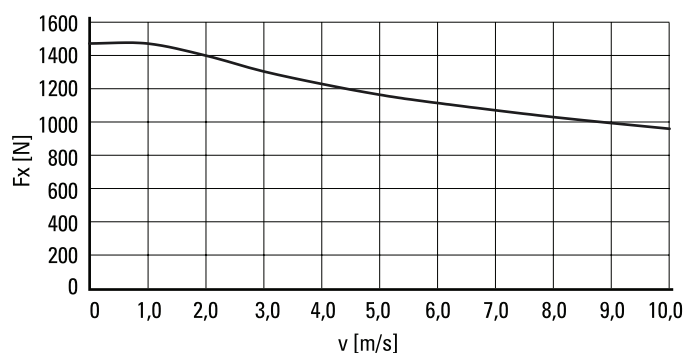
³ See diagram Force Fx

Carriage Idle Torque, (M idle) [Nm]

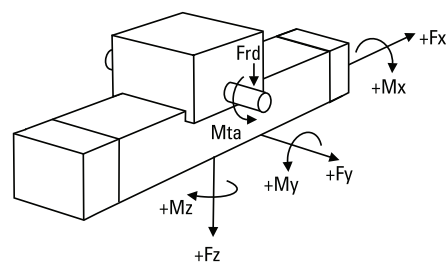
Input speed [rpm]	Idle torque [Nm]
150	2,4
1500	3,5
3000	5,0

M idle = the input torque needed to move the carriage with no load on it.

Force Fx as a Function of the Speed

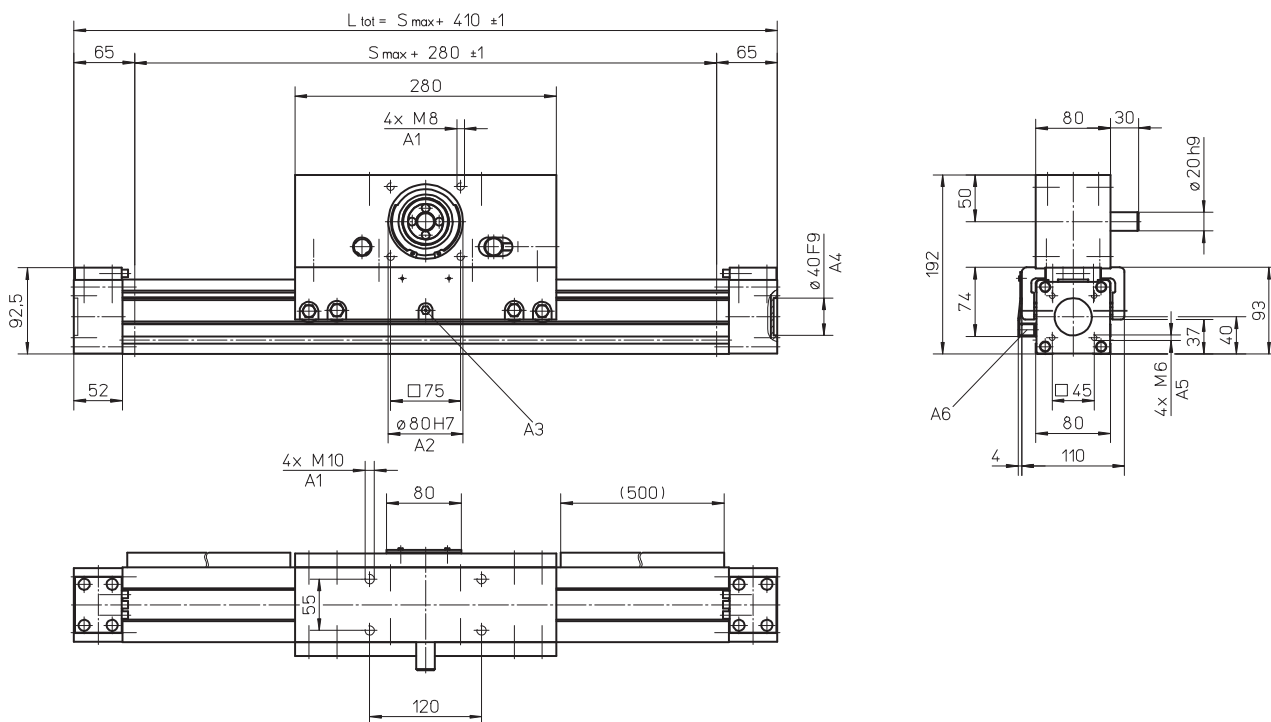


Definition of Forces



WHZ80

Belt Drive, Wheel Guide

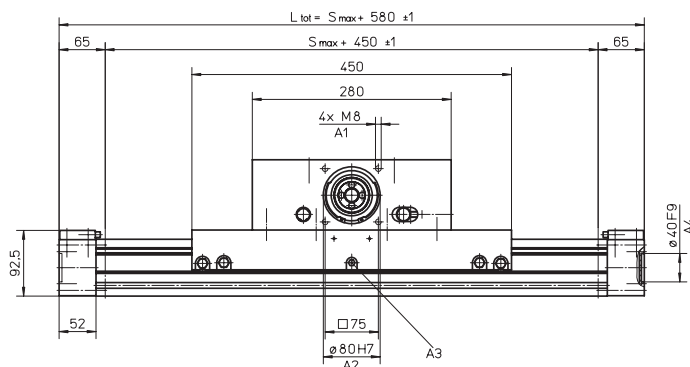


A1: depth 20
 A2: depth 3,5
 A3: funnel type lubricating nipple DIN3405-M6x1-D1

A4: depth 4
 A5: depth 15
 A6: ENF inductive sensor rail option kit (optional)

Long Carriage

Parameter		WHZ80
Carriage length	[mm]	450
Dynamic load torque (My), maximum	[Nm]	345
Dynamic load torque (Mz), maximum	[Nm]	150
Weight	[kg]	7,4

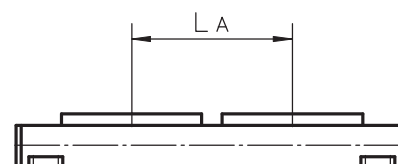


A1: depth 20
 A2: depth 3,5

A3: funnel type lubricating nipple DIN3405-M6x1-D1
 A4: depth 4

Double Carriages²

Parameter		WHZ80
Minimum distance between carriages (L _A)	[mm]	300
Dynamic load (F _y), maximum	[N]	1764
Dynamic load (F _z), maximum	[N]	4200
Dynamic load torque (M _y), maximum	[Nm]	L _A ¹ × 0,882
Dynamic load torque (M _z), maximum	[Nm]	L _A ¹ × 2,1
Force required to move second carriage	[N]	20
Total length (L _{tot})	[mm]	S _{max} + 410 + L _A



¹ Value in mm
² Second carriage is always a long carriage