

Quantum Series

Brushless DC Motors

For Further Information Contact

Heason Technologies Group Ltd

Tel: +44(0)1403 755800

Fax: +44(0)1403 755810

Email: sales@heason.com

Freephone 0800 374903 www.heason.com

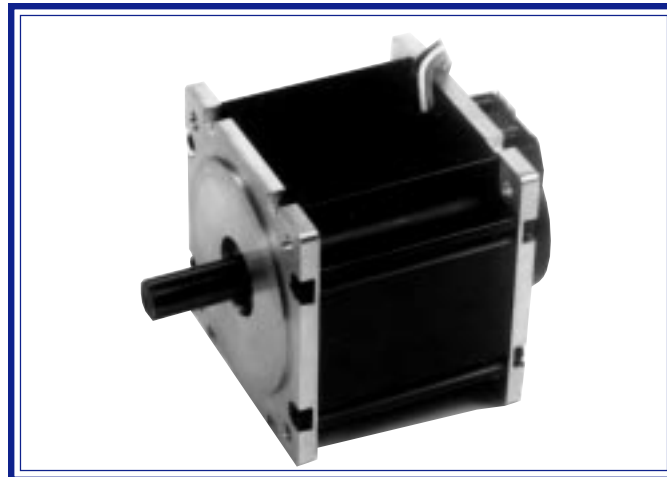
Heason
Technologies Group

Size 17, 23, 34 and 56

Brushless Servo Motors



Frameless and Housed



Engineering Guide

Hathaway
Emoteq Corp

Emoteq Corp

10002 E. 43rd St. So., Tulsa, OK 74146 USA

Tel 918 627 1845/800 221 7572 Fax 918 660 0207

WWW.Emoteq.com

Emoteq UK

Box 772, Rottingdean BN2 8ND, United Kingdom

Tel 01273 390800 Fax 01273 301060

Quantum Series Brushless DC Motors

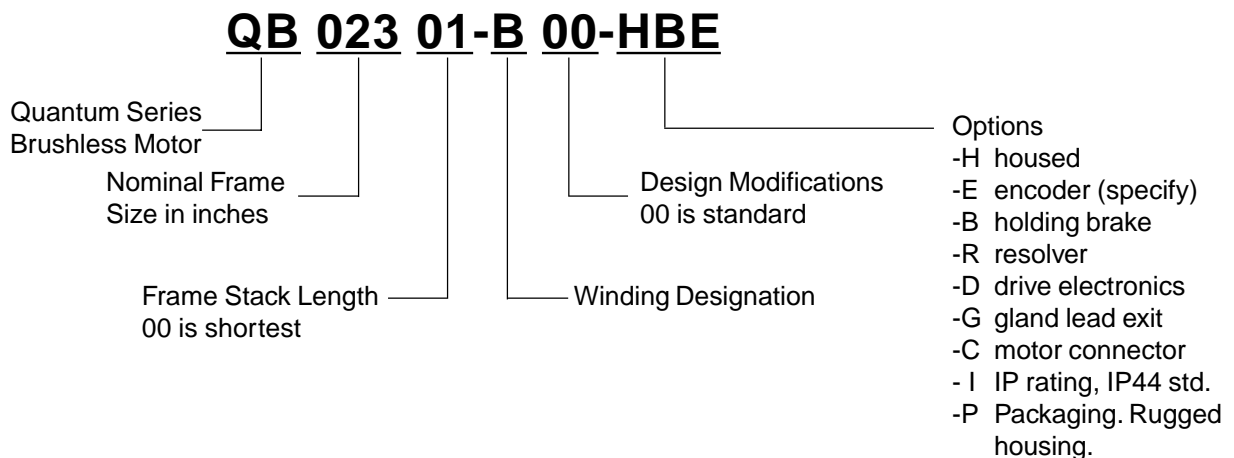
Selection Guide

Quantum Series Selection Guide

Model	Cont. Stall Torque		Max Rated Torque		±Max Cont Power		Housed Diameter		Housing Length		Frameless Diameter		Frameless Length	
	oz.in.	Nm	oz.in.	Nm	Watt	@RPM	in.	mm	in.	mm	in.	mm	in.	mm
QB01700	11.5	0.08	92	0.65	68	12500	1.64	41.7	2.125	54.0	1.410	35.81	1.34	34.0
QB01701	21.5	0.15	169	1.19	113	10000	1.64	41.7	2.625	66.7	1.410	35.81	1.84	46.7
QB01702	33.5	0.23	264	1.87	167	10000	1.64	41.7	3.125	79.4	1.410	35.81	2.34	59.4
QB01703	43.5	0.30	341	2.41	211	10000	1.64	41.7	3.625	92.1	1.410	35.81	2.84	72.1
QB02300	51.0	0.36	558	3.9	202	8000	2.30	58.4	2.800	71.1	2.180	55.37	1.64	41.6
QB02301	96.0	0.68	1117	7.9	311	7000	2.30	58.4	3.550	90.1	2.180	55.37	2.39	60.7
QB02302	138	0.98	1676	11.8	411	6000	2.30	58.4	4.300	109.2	2.180	55.37	3.14	79.7
QB02303	182	1.28	2212	15.6	528	6000	2.30	58.4	5.050	128.2	2.180	55.37	3.89	98.8
QB03400	115	0.81	761	5.3	410	7000	3.42	86.9	3.01	76.5	3.200	81.28	1.64	41.6
QB03401	222	1.57	1538	10.8	607	6000	3.42	86.9	3.76	95.5	3.200	81.28	2.39	60.7
QB03402	328	2.32	2307	16.2	846	5000	3.42	86.9	4.51	114.6	3.200	81.28	3.14	79.7
QB03403	429	3.03	2961	20.9	1072	5000	3.42	86.9	5.26	133.6	3.200	81.28	3.89	98.8
	ft.lb.	Nm	ft.lb.	Nm	Watt	@RPM	in.	mm	in.	mm	in.	mm	in.	mm
QB05600	3.17	4.29	22.3	30.3	1282	4000	5.60	142.2	4.84	123.0	5.000	127.00	2.47	62.7
QB05601	5.92	8.03	43.7	57.2	1920	3000	5.60	142.2	5.84	148.3	5.000	127.00	3.47	88.1
QB05602	8.19	11.1	62.8	85.1	2471	3000	5.60	142.2	6.84	173.7	5.000	127.00	4.47	113.5
QB05603	10.4	14.1	83.7	113.5	2875	3000	5.60	142.2	7.84	199.0	5.000	127.00	5.47	138.9

‡ The maximum continuous output power may not be available on all versions due to winding constraints. QS versions can attain higher output power levels. Please see page 18 for speed-torque curves.

Quantum Series Model Numbering



© 1998-2000 Emoteq Corp. Data subject to change without notice. Metric dimensions provided for reference only.

Hathaway
Emoteq Corp

Emoteq Corp.
10002 E. 43rd St. So.
Tulsa, OK 74116
USA
Tel 918 627 1845
Fax 918 660 0207
2

Emoteq UK
Box 772,
Rottingdean BN2 8ND
United Kingdom
Tel 01273 390800
Fax 01273 301060

Quantum Series Brushless DC Motors

Product Description

Applications

Quantum Motors find application in a wide range of systems demanding compact, highly dynamic, and clean operating motors such as:

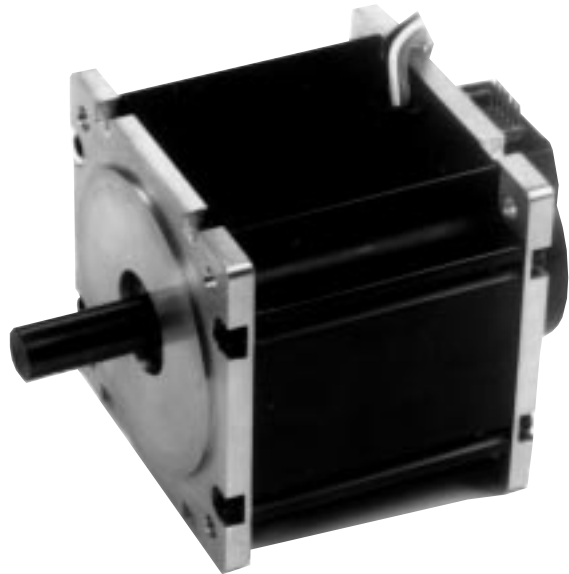
- Semiconductor manufacturing equipment and other clean room applications
- Disk drive media processing systems
- High reliability pumps and control systems including medical applications
- Coordinate measuring machines
- Large capacity tape and disk storage and retrieval systems
- Precision grinding/machining systems for contact and eye glasses lenses
- Electronics pick and place automated assembly systems
- Machine tool axis drives

Quantum Series Brushless DC Motors

Quantum Series motors are designed for operation in highly dynamic velocity or position servo systems where compact size and low weight are system requirements. Quantum motors have been electro-mechanically optimized for high output torques, low cogging torque, and minimal cost through advanced engineering and a commitment to high volume production methods and extensive parts tooling.



Frameless Quantum Motor QB03400



QB03400 housed motor with encoder

Quantum Series Features

- Cont. stall torques 10 oz.in. to 10.4 ft.lb. (0.07 to 2.61 Nm)
- High torque to size and inertia ratios
- Housed frame sizes 17, 23, 34 and 56 frame sizes
- NEMA standard flange mounting
- Provision for foot mounting is integral to the housing
- Frameless versions available for tight integration into systems eliminating coupling torsional problems and resulting in a short axial length
- Both housed or frameless configurations with integrated Hall Effects sensors for commutation
- Winding and mechanical changes easily undertaken
- Wide range of mechanical options including brakes, resolvers, encoders, connections, and IP Rated sealing
- Stainless steel shafts standard on housed motors with long life bearings
- Rugged housing design that can easily be sealed to operate in tough application environments
- Coated magnets for corrosion protection
- Hall effect sensors with separate trigger magnets are spaced away from stator coils for greater electrical noise and heat immunity
- Quantum motors are compatible with six step (trapezoidal) or sine wave commutation
- Private labeling is available to qualified OEMs and resellers
- An extensive range of drive electronic solutions can be provided

Hathaway
Emoteq Corp

Emoteq Corp.
10002 E. 43rd St. So.
Tulsa, OK 74116
USA
Tel 918 627 1845
Fax 918 660 0207

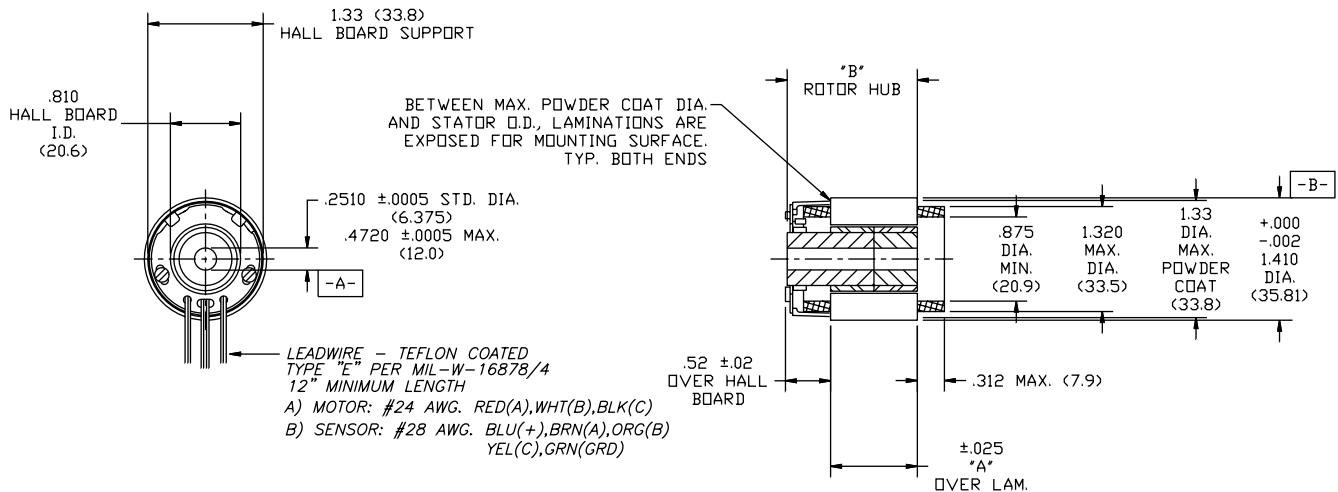
Emoteq UK
Box 772,
Rottingdean BN2 8ND
United Kingdom
Tel 01273 390800
Fax 01273 301060

Quantum Series

Size 17

Brushless DC Motors

Frameless Motor

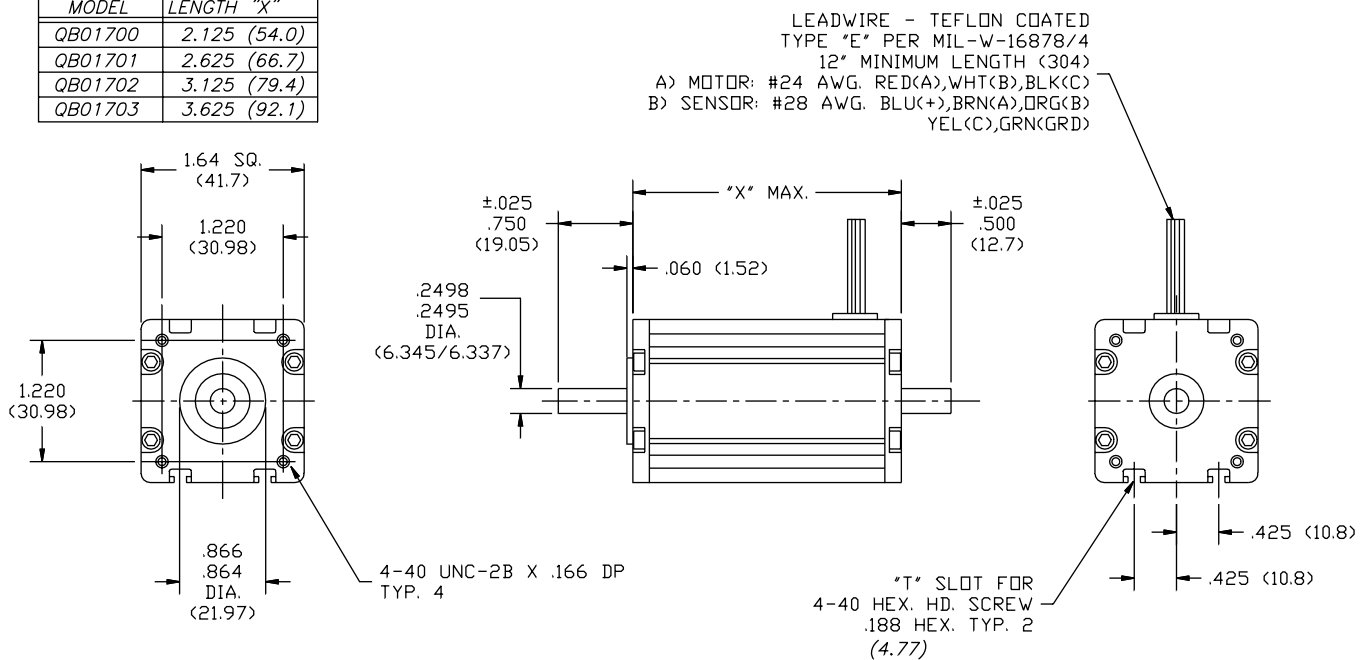


- MOTOR SUPPLIED AS TWO SEPARATE COMPONENTS, ROTOR ASSEMBLY AND STATOR ASSEMBLY.
- DIAMETERS "A" AND "B" TO BE CONCENTRIC WITHIN .002 WHEN MOUNTED.
- STD. HUB LENGTH IS 1.000" LG. .500" HUBS ARE PROVIDED FOR CUSTOMER STACKING BEYOND 1.000".

MODEL NO.	"A" STATOR	"B" ROTOR
QB01700	.500 (12.70)	1.000 (25.40)
QB01701	1.000 (25.40)	1.500 (38.10)
QB01702	1.500 (38.10)	2.000 (50.80)
QB01703	2.000 (50.80)	2.500 (63.5)

Housed Motor

MODEL	LENGTH "X"
QB01700	2.125 (54.0)
QB01701	2.625 (66.7)
QB01702	3.125 (79.4)
QB01703	3.625 (92.1)



Hathaway
Emoteq Corp

Emoteq Corp
 10002 E. 43rd St. So.
 Tulsa, OK 74146
 USA
 Tel 918 627 1845
 Fax 918 660 0207
 4

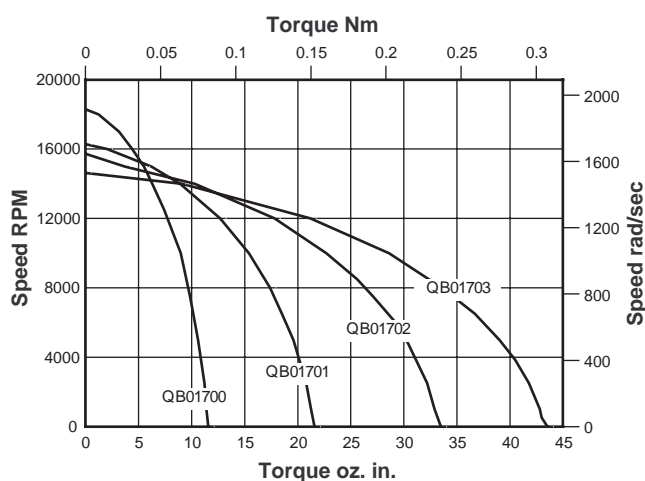
Emoteq UK
 Box 772,
 Rottingdean BN2 8ND
 United Kingdom
 Tel 01273 390800
 Fax 01273 301060

Quantum Series

Size 17

Brushless DC Motors

PARAMETER	SYMBOL	UNIT	QB01700			QB01701			QB01702			QB01703		
Size Constants														
Max Cont. Stall Torque	T_C	oz.in. Nm	11.5 0.08			21.6 0.15			33.5 0.23			43.5 0.30		
Max Rated Torque, 25%	T_R	oz.in. Nm	92.0 0.65			169 1.19			264 1.87			341 2.41		
Motor Constant,	K_M	oz.in./√W Nm/√W	3.20 0.023			4.99 0.035			6.85 0.048			8.11 0.057		
Electrical Time Constant	T_E	msec	0.38			0.52			0.59			0.65		
Mechanical Time Constant	T_M	msec	2.03			1.67			1.33			1.26		
Thermal Resistance	TPR	°C/Watt	4.7			3.29			2.58			2.14		
Viscous Damping	F_V	oz.in./rpm Nm/rpm	7.5E-5 5.3E-7			1.5E-4 1.1E-6			2.3E-4 1.6E-6			3.1E-4 2.2E-6		
Max Cogging Torque	T_F	oz.in. Nm	1.0 7E-3			1.5 1.1E-2			1.8 1.3E-2			2.2 1.6E-2		
Mechanical Constants														
Frameless Motor Inertia	J_M	oz.in.s ² Kg.m ²	1.4E-4 1.0E-7			2.9E-4 2.0E-6			4.4E-4 3.1E-6			5.8E-4 4.1E-6		
Frameless Motor Weight	Wt	oz. Kg	2.5 0.07			5.0 0.14			7.4 0.21			9.7 0.27		
Housed Motor Inertia	J_M	oz.in.s ² Kg.m ²	1.5 1.1E-6			3.0E-4 2.1E-6			4.4E-4 3.1E-6			5.9E-4 4.2E-6		
Housed Motor Weight	Wt	oz. Kg	7.8 0.22			12.1 0.34			16.4 0.47			20.5 0.58		
Number of Poles	-	-	6			6			6			6		
Winding Constants														
Design Voltage	V_P	Volts	24	40	130	24	40	130	24	40	130	24	40	130
Peak Torque	T_P	oz.in. Nm	92 0.65	92 0.65	92 0.65	163 1.15	169 1.19	169 1.19	219 1.55	264 1.87	264 1.87	258 1.82	341 2.41	341 2.41
Peak Current	I_P	Amperes	36	24	15	44	35	14	42	41	16	42	49	20
Torque Constant, ±10%	K_T	oz.in./A Nm/A	2.54 0.018	3.84 0.027	6.04 0.043	3.65 0.026	4.79 0.034	11.35 0.080	5.13 0.036	6.32 0.045	16.20 0.114	6.21 0.043	6.88 0.049	16.83 0.119
No Load Speed	S_{NL}	RPM Rad/s	12775 1337	14068 1473	29095 3046	8874 829	11287 1182	15488 1621	6318 661	8555 895	10851 1136	5302 555	7855 822	10444 1093
BEMF Constant, ±10%	K_B	V/KRPM V/rad/s	1.88 0.018	2.84 0.027	4.46 0.043	2.70 0.026	3.54 0.034	8.39 0.080	3.79 0.036	4.67 0.045	11.98 0.114	4.52 0.043	5.09 0.049	12.44 0.119
Terminal Resistance, ±12%	R_M	Ohms	0.63	1.51	3.76	0.53	1.08	6.44	0.56	0.86	5.62	0.56	0.72	4.43
Terminal Inductance, ±30%	L_M	mH	0.24	0.55	1.36	0.28	0.48	2.69	0.33	0.50	3.29	0.37	0.47	2.81



Continuous Duty Speed/Torque Curves for 100°C Temperature Rise.

The continuous duty speed/torque curves provide a guide to the operational capability of the motors. Continuous operation at a loadpoint on or under the curve limits the temperature rise of the motor to 100°C. Although the duration of acceleration or deceleration periods should be checked, the RMS speed and torque combination should also lie on or under the continuous duty curve. The curves assume housed motors mounted to a nominal size of aluminum heatsink in a 25°C ambient environment and still air cooling. Higher ambient temperatures will generally decrease the continuous duty capability of a motor. With increased heatsink areas or improved cooling such as forced air or water, the continuous duty capability of the motor may be increased. However, for most applications, the practical maximum motor temperature is 150°C with Hall effect sensors. Higher motor temperatures can easily be accommodated with different materials.



Emotek Corp
10002 E. 43rd St. So.
Tulsa, OK 74146
USA
Tel 918 627 1845
Fax 918 660 0207

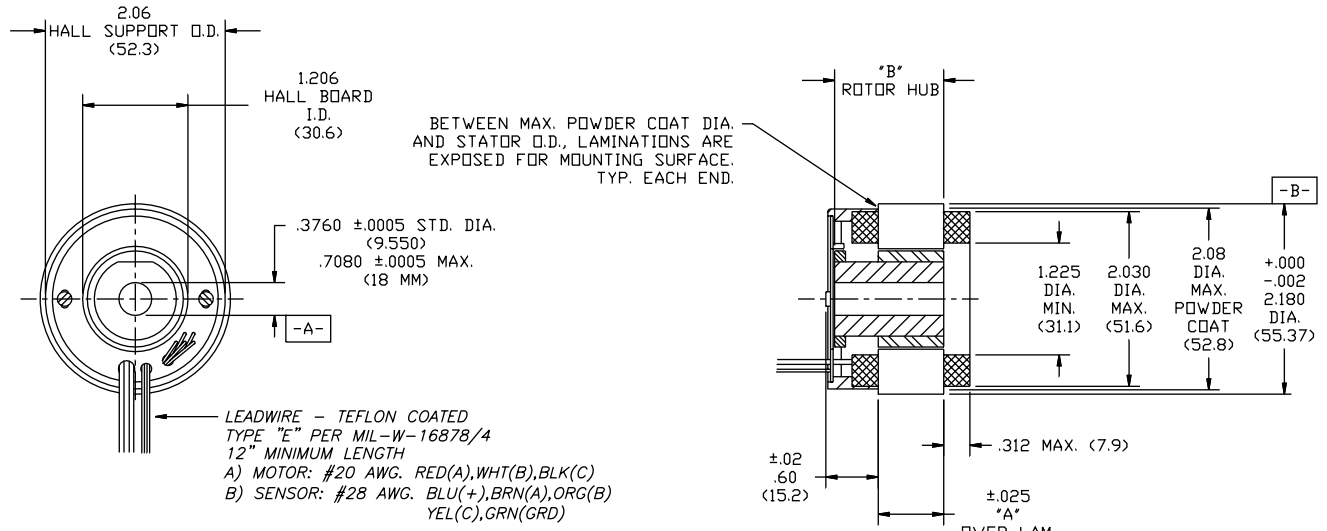
Emotek UK
Box 772,
Rottingdean BN2 8ND
United Kingdom
Tel 01273 390800
Fax 01273 301060

Quantum Series

Size 23

Brushless DC Motors

Frameless Motor

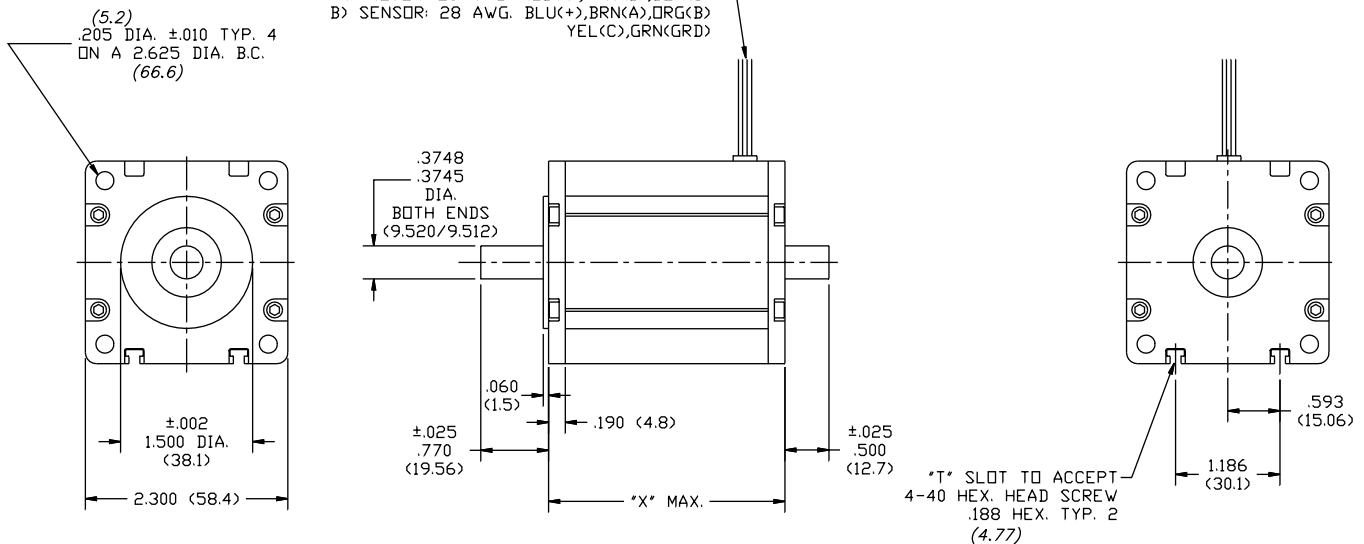


1. MOTOR SUPPLIED AS TWO SEPARATE COMPONENTS, ROTOR ASSEMBLY AND STATOR ASSEMBLY.
2. DIAMETERS "A" AND "B" TO BE CONCENTRIC WITHIN .002 WHEN MOUNTED
3. STD. HUB LENGTH IS 1.250" LG. .750" HUBS ARE PROVIDED FOR CUSTOMER STACKING BEYOND 1.250".

MODEL NO.	"A" STATOR	"B" ROTOR
QB02300	.750 (19.05)	1.250 (31.75)
QB02301	1.500 (38.10)	2.000 (50.80)
QB02302	2.250 (57.15)	2.750 (69.85)
QB02303	3.000 (76.2)	3.500 (88.90)

Housed Motor

MODEL NO.	"X"
QB02300	2.800 (71.12)
QB02301	3.550 (90.17)
QB02302	4.300 (109.22)
QB02303	5.050 (128.27)



Hathaway
Emoteq Corp

Emoteq Corp
 10002 E. 43rd St. So.
 Tulsa, OK 74146
 USA
 Tel 918 627 1845
 Fax 918 660 0207

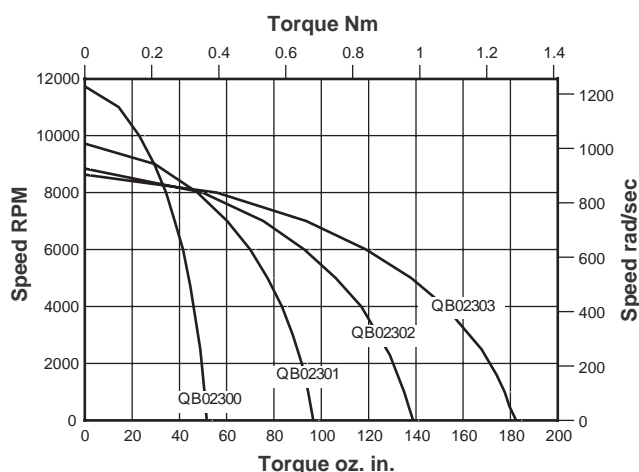
Emoteq UK
 Box 772,
 Rottingdean BN2 8ND
 United Kingdom
 Tel 01273 390800
 Fax 01273 301060

Quantum Series

Size 23

Brushless DC Motors

PARAMETER	SYMBOL	UNIT	QB02300			QB02301			QB02302			QB02303		
Size Constants														
Max Cont. Stall Torque	T_C	oz.in.	51			96			138			182		
			0.36			0.68			0.98			1.28		
Max Rated Torque, 25%	T_R	oz.in.	558			1117			1676			2212		
			3.94			7.9			11.8			15.6		
Motor Constant,	K_M	oz.in./√W	10.8			17.2			22.0			25.7		
			0.076			0.121			0.155			0.181		
Electrical Time Constant	T_E	msec	0.94			1.14			1.22			1.25		
Mechanical Time Constant	T_M	msec	1.30			1.03			0.94			0.92		
Thermal Resistance	TPR	°C/Watt	2.79			2.00			1.59			1.26		
Viscous Damping	F_V	oz.in./rpm	3.5E-4			7.5E-4			1.1E-3			1.5E-3		
			2.5E-6			5.3E-6			7.9E-6			1.1E-5		
Max Cogging Torque	T_F	oz.in.	2.6			4.1			5.1			6.3		
			0.018			0.029			0.036			0.044		
Mechanical Constants														
Frameless Motor Inertia	J_M	oz.in.s ²	1.0E-3			2.1E-3			3.2E-3			4.3E-3		
			7.6E-6			1.5E-5			2.3E-5			3.0E-5		
Frameless Motor Weight	Wt	oz	8.9			17.1			25.3			33.4		
			0.25			0.48			0.71			0.95		
Housed Motor Inertia	J_M	oz.in.s ²	1.1E-3			2.2E-3			3.3E-3			4.3E-3		
			7.9E-6			1.5E-5			2.3E-5			3.0E-5		
Housed Motor Weight	Wt	oz	24.1			32.6			41.2			50.1		
			0.68			0.92			1.17			1.42		
Number of Poles	-	-	6			6			6			6		
Winding Constants														
Design Voltage	V_P	Volts	24			24			24			24		
Peak Torque	T_P	oz.in.	516			658			1080			1107		
			3.64			4.65			7.63			7.82		
Peak Current	I_P	Amperes	95			61			100			77		
			5.4			10.7			10.7			14.3		
Torque Constant, ±10%	K_T	oz.in./A	0.038			0.076			0.076			0.101		
			0.048			0.096			0.095			0.126		
No Load Speed	S_{NL}	RPM	5994			3014			3014			2269		
			627			315			315			237		
BEMF Constant, ±10%	K_B	V/KRPM	4.0			7.9			7.9			10.5		
			0.038			0.076			0.076			0.101		
Terminal Resistance, ±12%	R_M	Ohms	0.25			0.39			0.24			0.31		
Terminal Inductance, ±30%	L_M	mH	0.23			0.45			0.29			0.39		



Continuous Duty Speed/Torque Curves for 100°C Temperature rise.

The continuous duty speed/torque curves provide a guide to the operational capability of the motors. Continuous operation at a loadpoint on or under the curve limits the temperature rise of the motor to 100°C. Although the duration of acceleration or deceleration periods should be checked, the RMS speed and torque combination should also lie on or under the continuous duty curve. The curves assume housed motors mounted to a nominal size of aluminum heatsink in a 25°C ambient environment and still air cooling. Higher ambient temperatures will generally decrease the continuous duty capability of a motor. With increased heatsink areas or improved cooling such as forced air or water, the continuous duty capability of the motor may be increased. However, for most applications, the practical maximum motor temperature is 150°C with Hall effect sensors. Higher motor temperatures can easily be accommodated with different materials.



Emotek Corp
 10002 E. 43rd St. So.
 Tulsa, OK 74146
 USA
 Tel 918 627 1845
 Fax 918 660 0207

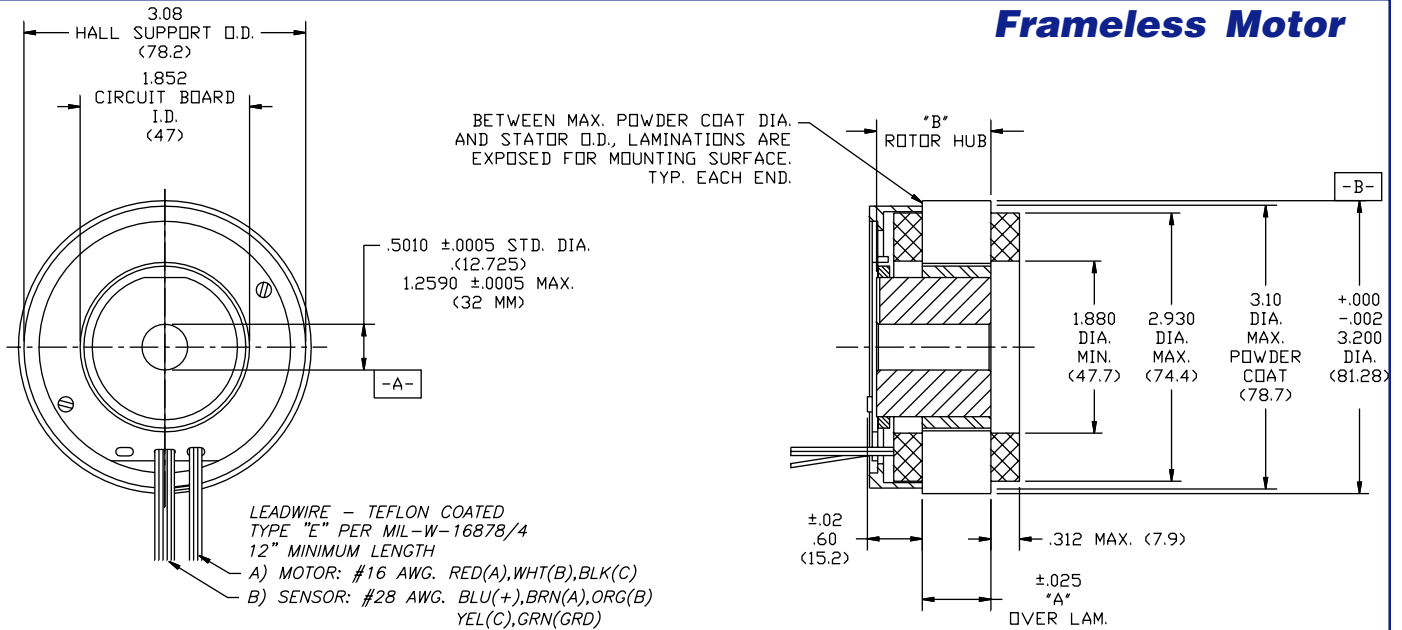
Emotek UK
 Box 772,
 Rottingdean BN2 8ND
 United Kingdom
 Tel 01273 390800
 Fax 01273 301060

Quantum Series

Size 34

Brushless DC Motors

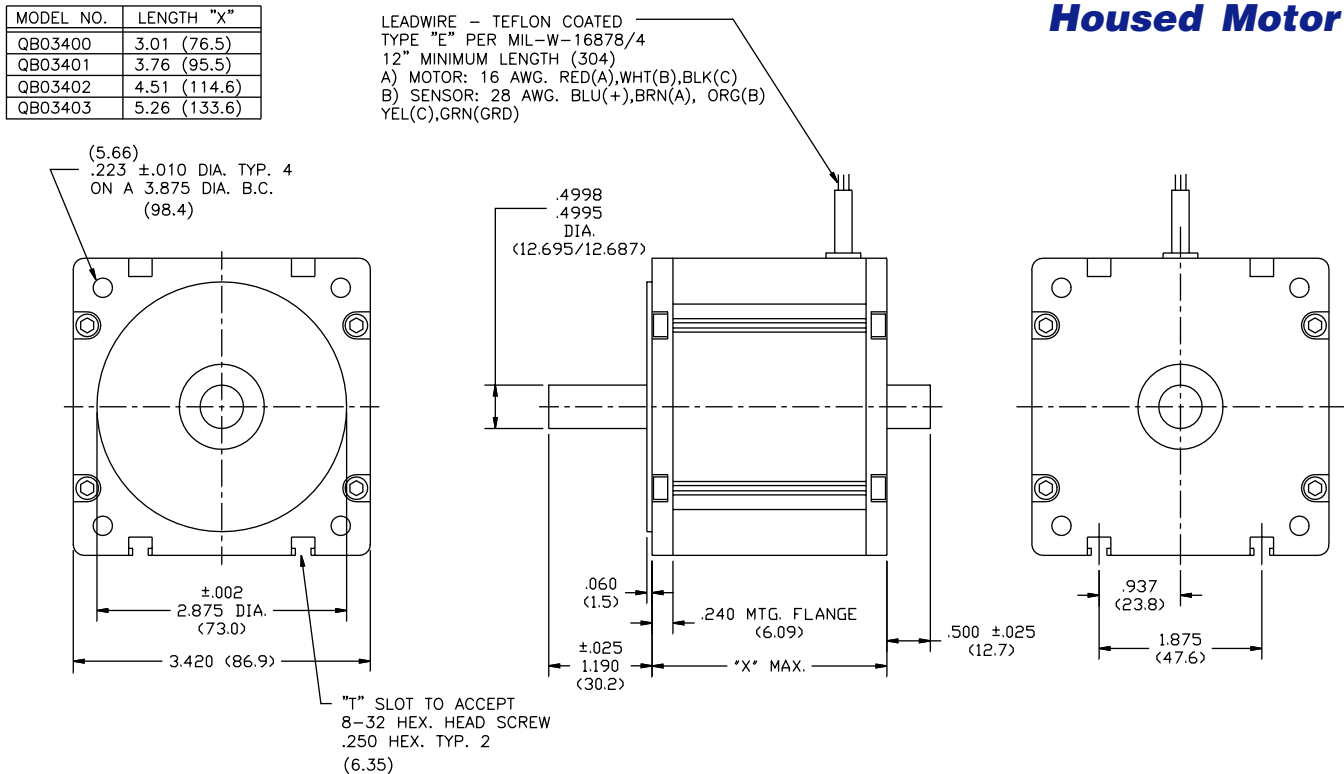
Frameless Motor



- MOTOR SUPPLIED AS TWO SEPARATE COMPONENTS, ROTOR ASSEMBLY AND STATOR ASSEMBLY.
- DIAMETERS "A" AND "B" TO BE CONCENTRIC WITHIN .002 WHEN MOUNTED.
- STD. HUB LENGTH IS 1.250" LG. .750" HUBS ARE PROVIDED FOR CUSTOMER STACKING BEYOND 1.250"

MODEL NO.	"A" STATOR	"B" ROTOR
QB03400	.750 (19.05)	1.250 (31.75)
QB03401	1.500 (38.10)	2.000 (50.80)
QB03402	2.250 (57.15)	2.750 (69.85)
QB03403	3.000 (76.20)	3.500 (88.90)

Housed Motor



Hathaway
Emotek Corp

Emotek Corp
10002 E. 43rd St. So.
Tulsa, OK 74146
USA
Tel 918 627 1845
Fax 918 660 0207

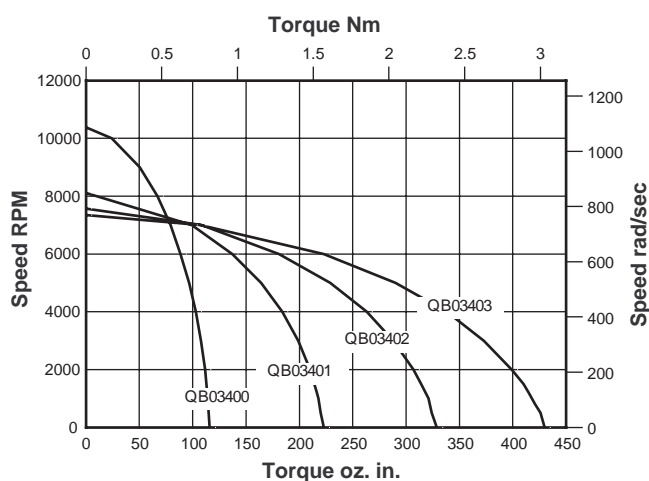
Emotek UK
Box 772,
Rottingdean BN2 8ND
United Kingdom
Tel 01273 390800
Fax 01273 301060

Quantum Series

Size 34

Brushless DC Motors

PARAMETER	SYMBOL	UNIT	QB03400			QB03401			QB03402			QB03403		
Size Constants														
Max Cont. Stall Torque	T_C	oz.in.	115			222			328			429		
			0.81			1.57			2.32			3.03		
Max Rated Torque, 25%	T_R	oz.in.	761			1538			2307			2961		
			5.38			10.8			16.2			20.9		
Motor Constant,	K_M	oz.in./√W	20.1			34.7			44.7			52.8		
			0.142			0.245			0.316			0.369		
Electrical Time Constant	T_E	msec	1.89			2.57			2.78			2.37		
Mechanical Time Constant	T_M	msec	2.59			1.74			1.57			1.53		
Thermal Resistance	TPR	°C/Watt	1.87			1.51			1.15			0.92		
Viscous Damping	F_V	oz.in./rpm	7.3E-4			1.5E-3			2.3E-3			3.2E-3		
			5.1E-6			1.0E-5			1.6E-5			2.2E-5		
Max Cogging Torque	T_F	oz.in.	3.5			5.0			6.5			8.0		
			0.025			0.035			0.046			0.056		
Mechanical Constants														
Frameless Motor Inertia	J_M	oz.in.s ²	7.4E-3			1.5E-2			2.2E-2			3.0E-2		
			5.2E-5			1.0E-4			1.5E-4			2.1E-4		
Frameless Motor Weight	Wt	oz	21.4			41.3			61.2			81.0		
			0.60			1.17			1.73			2.29		
Housed Motor Inertia	J_M	oz.in.s ²	7.5E-3			1.5E-2			2.2E-2			3.0E-2		
			5.3E-5			1.0E-4			1.5E-4			2.1E-4		
Housed Motor Weight	Wt	oz	54.6			78.1			103.3			127.3		
			1.55			2.24			2.92			3.6		
Number of Poles	-	-	6			6			6			6		
Winding Constants														
			A	B	C	A	B	C	A	B	C	A	B	C
Design Voltage	V_P	Volts	24	40	130	24	40	130	24	40	130	24	40	130
Peak Torque	T_P	oz.in.	708	761	761	1535	1538	1538	2090	2307	2307	2516	2961	2961
		Nm	5.00	5.38	5.38	10.8	10.8	10.8	14.7	16.2	16.2	17.7	21.1	20.9
Peak Current	I_P	Amperes	51	49	34	81	65	40	91	81	51	96	100	74
Torque Constant, ±10%	K_T	oz.in./A	13.7	15.4	21.8	18.8	23.5	37.6	22.9	28.2	45.0	26.0	29.4	39.6
		Nm/A	0.098	0.109	0.154	0.133	0.166	0.266	0.162	0.200	0.318	0.184	0.208	0.280
No Load Speed	S_{NL}	RPM	2367	3499	8037	1722	2286	4665	1413	1913	3802	1244	1835	4430
		Rad/s	247	366	841	180	240	488	148	200	408	130	192	464
BEMF Constant, ±10%	K_B	V/KRPM	10.1	11.4	16.1	13.9	17.4	27.8	16.9	20.9	33.3	19.2	21.7	29.3
		V/rad/s	0.097	0.109	0.154	0.133	0.166	0.266	0.162	0.200	0.318	0.184	0.208	0.280
Terminal Resistance, ±12%	R_M	Ohms	0.46	0.58	1.17	0.29	0.46	1.24	0.26	0.40	1.03	0.24	0.31	0.56
Terminal Inductance, ±30%	L_M	mH	0.88	1.11	2.24	0.75	1.18	3.03	0.73	1.11	2.82	0.59	0.75	1.36



Continuous Duty Speed/Torque Curves for 100°C Temperature rise.

The continuous duty speed/torque curves provide a guide to the operational capability of the motors. Continuous operation at a loadpoint on or under the curve limits the temperature rise of the motor to 100°C. Although the duration of acceleration or deceleration periods should be checked, the RMS speed and torque combination should also lie on or under the continuous duty curve. The curves assume housed motors mounted to a nominal size of aluminum heatsink in a 25°C ambient environment and still air cooling. Higher ambient temperatures will generally decrease the continuous duty capability of a motor. With increased heatsink areas or improved cooling such as forced air or water, the continuous duty capability of the motor may be increased. However, for most applications, the practical maximum motor temperature is 150°C with Hall effect sensors. Higher motor temperatures can easily be accommodated with different materials.

Hathaway
Emoteq Corp

Emoteq Corp
10002 E. 43rd St. So.
Tulsa, OK 74146
USA
Tel 918 627 1845
Fax 918 660 0207

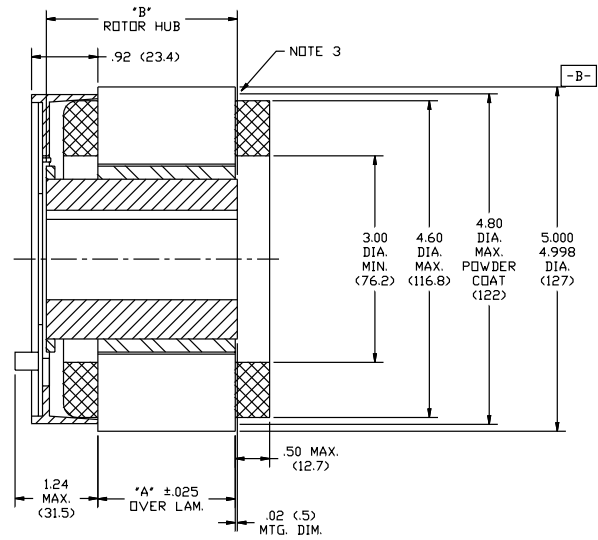
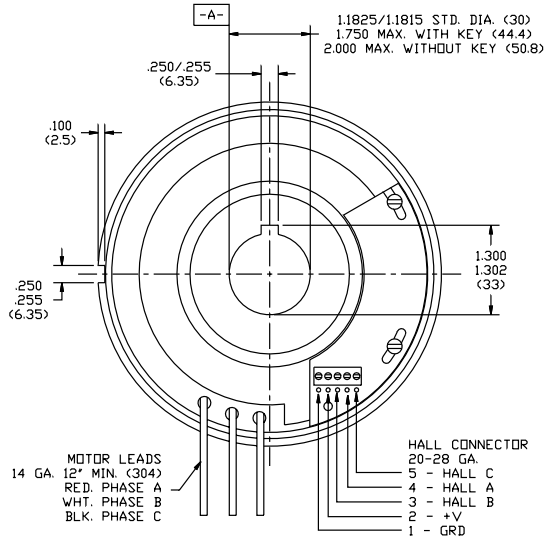
Emoteq UK
Box 772,
Rottingdean BN2 8ND
United Kingdom
Tel 01273 390800
Fax 01273 301060

Quantum Series

Size 56

Brushless DC Motors

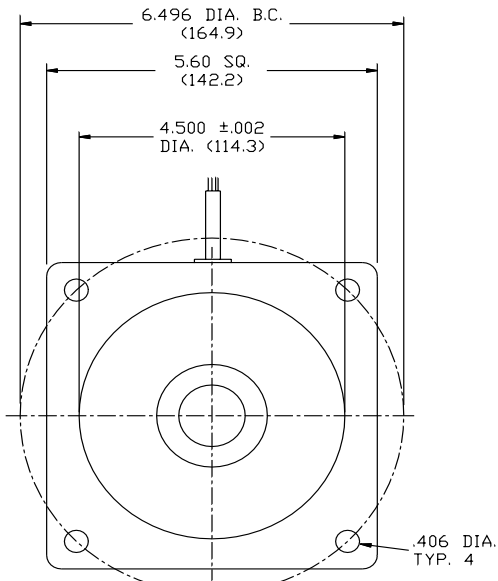
Frameless Motor



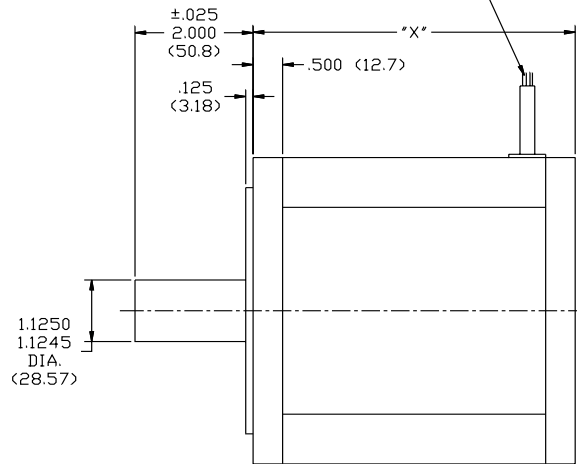
- MOTOR SUPPLIED AS TWO SEPARATE COMPONENTS, ROTOR ASSEMBLY AND STATOR ASSEMBLY.
- DIAMETERS "A" AND "B" TO BE CONCENTRIC WITHIN .005 WHEN MOUNTED.
- BETWEEN STATOR O.D. AND POWDER COAT, LAMINATIONS ARE EXPOSED FOR MOUNTING SURFACE, BOTH ENDS.

MODEL	"A" STATOR	"B" ROTOR
5600	1.0 (25.4)	1.78 (45.2)
5601	2.0 (50.8)	2.81 (71.3)
5602	3.0 (76.2)	3.81 (96.7)
5603	4.0 (101.6)	4.84 (122.9)
5604	5.0 (127)	5.84 (148.3)
5605	6.0 (152.4)	6.87 (174.5)

Housed Motor



LEADWIRE - TEFLON COATED
 TYPE "E" PER MIL-W-16878/4
 12" MIN. LENGTH (305)
 A) MOTOR: 14 AWG. RED(A), WHT(B), BLK(C)
 B) SENSOR: 24 AWG. BLU(+), BRN(A), ORG(B)
 YEL(C), GRN(GRD)



MODEL	"X"
QB05600	4.84 (123)
QB05601	5.84 (148.3)
QB05602	6.84 (173.7)
QB05603	7.84 (199)
QB05604	8.84 (224.5)
QB05605	9.84 (250)

Hathaway
Emoteq Corp

Emoteq Corp
 10002 E. 43rd St. So.
 Tulsa, OK 74146
 USA
 Tel 918 627 1845
 Fax 918 660 0207
 10

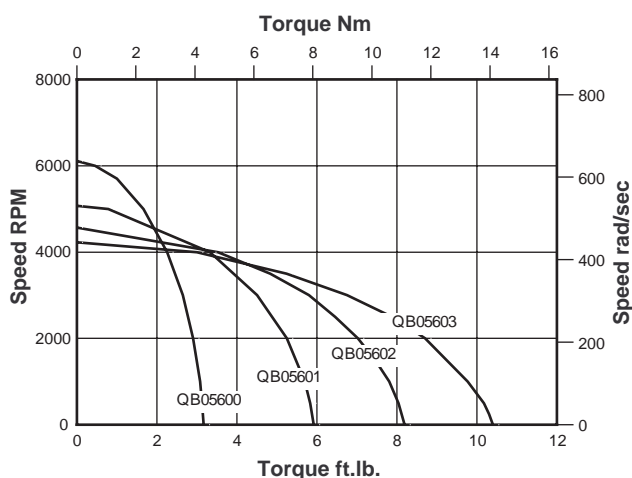
Emoteq UK
 Box 772,
 Rottingdean BN2 8ND
 United Kingdom
 Tel 01273 390800
 Fax 01273 301060

Quantum Series

Size 56

Brushless DC Motors

PARAMETER	SYMBOL	UNIT	QB05600			QB05601			QB05602			QB05603		
Size Constants														
Max Cont. Stall Torque	T_C	ft.lb.	3.17			5.92			8.19			10.40		
		Nm	4.29			8.03			11.10			14.10		
Max Rated Torque, 25%	T_R	ft.lb.	22.3			43.7			62.8			83.7		
		Nm	30.3			57.2			85.1			113.5		
Motor Constant,	K_M	ft.lb./V	0.42			0.65			0.809			0.957		
		Nm/V	0.56			0.88			1.09			1.29		
Electrical Time Constant	T_E	msec	5.09			5.49			6.59			6.83		
Mechanical Time Constant	T_M	msec	1.13			0.93			0.92			0.88		
Thermal Resistance	TPR	°C/Watt	1.09			0.75			1.15			0.52		
Viscous Damping	F_i	ft.lb./rpm	1.7E-5			3.6E-5			5.5E-5			7.4E-5		
		Nm/rpm	2.3E-5			4.9E-5			7.5E-5			1.0E-4		
Max Cogging Torque	T_F	ft.lb.	0.057			0.099			0.141			0.182		
		Nm	0.078			0.134			0.191			0.247		
Mechanical Constants														
Frameless Motor Inertia	J_M	ft.lb.s ²	2.7E-4			5.4E-4			8.1E-4			1.1E-3		
		Kg.m ²	3.6E-4			7.3E-4			1.1E-3			1.5E-3		
Frameless Motor Weight	Wt	lb.	3.79			8.81			12.8			17.0		
		Kg	1.72			3.99			5.84			7.76		
Housed Motor Inertia	J_M	ft.lb.s ²	4.6E-4			8.3E-4			1.2E-3			1.6E-3		
		Kg.m ²	6.3E-4			1.1E-3			1.6E-3			2.1E-3		
Housed Motor Weight	Wt	lb.	10.59			17.31			23.0			28.8		
		Kg	4.80			7.84			10.4			13.0		
Number of Poles	-	-	8			8			8			8		
Winding Constants														
Design Voltage	V_p	Volts	A	B	C	A	B	C	A	B	C	A	B	C
Peak Torque	T_p	ft.lb.	40	130	300	40	130	300	40	130	300	40	130	300
		Nm	22.3	22.3	22.3	43.7	43.7	43.7	62.8	62.8	62.8	83.7	83.7	83.7
Peak Current	I_p	Amperes	30.3	30.3	30.3	59.2	59.2	59.2	85.1	85.1	85.1	113.5	113.5	113.5
Torque Constant, ±10%	K_T	ft.lb./A	224	121	62	409	204	93	498	263	124	640	299	154
		Nm/A	0.100	0.184	0.358	0.107	0.214	0.467	0.126	0.238	0.504	0.131	0.280	0.541
No Load Speed	S_{NL}	RPM	0.135	0.250	0.486	0.145	0.290	0.633	0.171	0.323	0.683	0.177	0.380	0.734
		Rad/s	2830	4971	5896	2634	4281	4528	2235	3847	4192	2156	3270	3903
BEMF Constant, ±10%	K_B	V/KRPM	296	520	617	275	448	474	234	402	439	225	342	408
		V/rad/s	14.3	26.1	50.8	15.1	30.3	66.2	17.8	33.8	71.5	18.5	39.7	76.8
Terminal Resistance, ±12%	R_M	Ohms	0.135	0.250	0.486	0.145	0.290	0.633	0.171	0.323	0.683	0.177	0.380	0.734
Terminal Inductance, ±30%	L_M	mH	0.056	0.196	0.761	0.027	0.107	0.511	0.024	0.085	0.400	0.019	0.088	0.324
			0.287	0.981	3.715	0.146	0.586	2.788	0.160	0.570	2.556	0.127	0.585	2.187



Continuous Duty Speed/Torque Curves for 100°C Temperature rise.

The continuous duty speed/torque curves provide a guide to the operational capability of the motors. Continuous operation at a loadpoint on or under the curve limits the temperature rise of the motor to 100°C. Although the duration of acceleration or deceleration periods should be checked, the RMS speed and torque combination should also lie on or under the continuous duty curve. The curves assume housed motors mounted to a nominal size of aluminum heatsink in a 25°C ambient environment and still air cooling. Higher ambient temperatures will generally decrease the continuous duty capability of a motor. With increased heatsink areas or improved cooling such as forced air or water, the continuous duty capability of the motor may be increased. However, for most applications, the practical maximum motor temperature is 150°C with Hall effect sensors. Higher motor temperatures can easily be accommodated with different materials.

Hathaway
Emoteq Corp

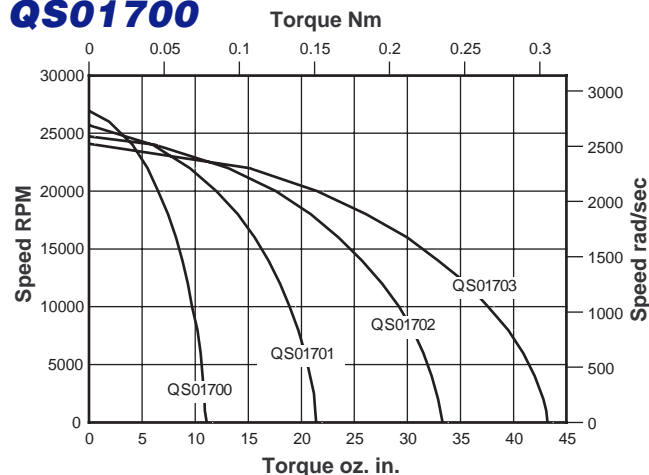
Emoteq Corp
10002 E. 43rd St. So.
Tulsa, OK 74146
USA
Tel 918 627 1845
Fax 918 660 0207

Emoteq UK
Box 772,
Rottingdean BN2 8ND
United Kingdom
Tel 01273 390800
Fax 01273 301060

Quantum Series Brushless DC Motors

QS High Efficiency

QS01700



QS High Efficiency Motors

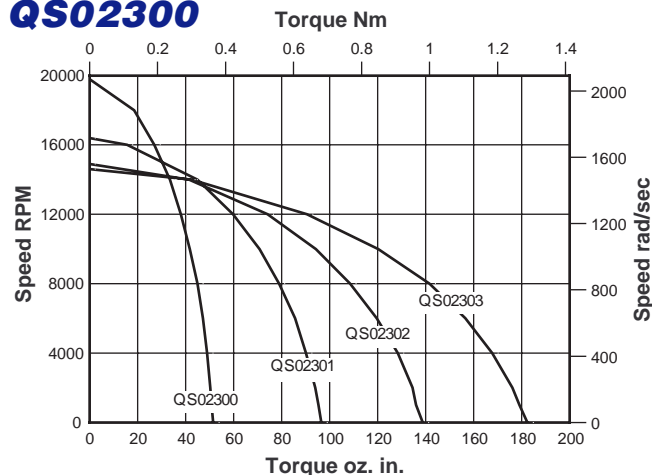
The QS versions of the Quantum Series of motors, are designed for increased operating efficiency at higher speeds. This is accomplished by the use of thinner, low core loss, lamination material. The result is that for a given temperature rise, the motor can operate at higher speed while still producing useful amounts of output torque compared to the standard Quantum Series motors (QB) that are optimized for servo performance at lower operating speeds.

The mechanical dimensions of the QS motors remain the same as the QB versions. Except for the Viscous Damping and Hysteresis Drag torque, the datasheet parameters for Size and Winding constants remain the same.

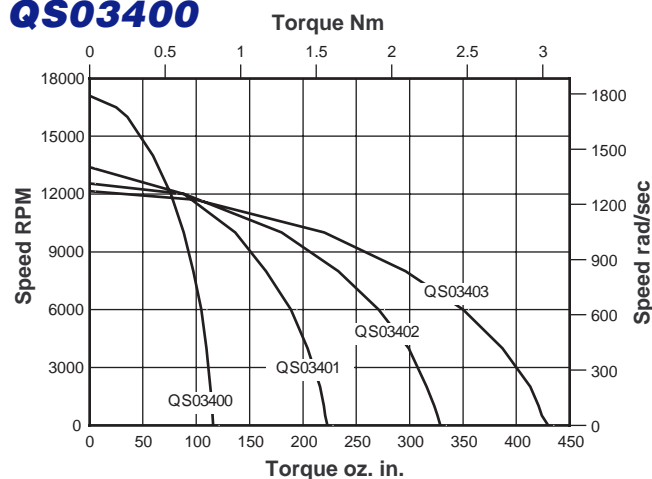
For loadpoints beyond those shown on the accompanying graphs, we can further optimize the magnetic circuit designs through geometry and material changes.

Additionally, windings which are optimized for a specific application's higher operating speeds can be provided.

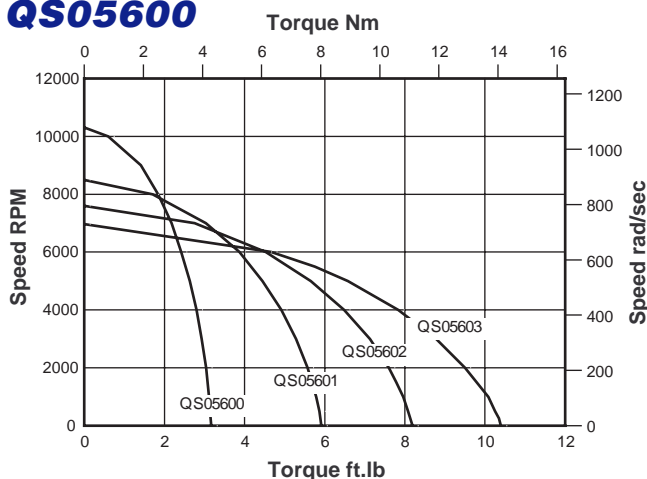
QS02300



QS03400



QS05600



Hathaway
Emoteq Corp

Emoteq Corp.

10002 E. 43rd St. So.
Tulsa, OK 74116
USA
Tel 918 627 1845
Fax 918 660 0207
12

Emoteq UK

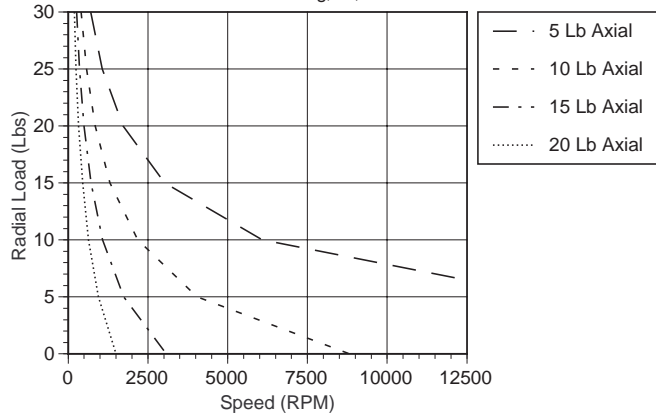
Box 772,
Rottingdean BN2 8ND
United Kingdom
Tel 01273 390800
Fax 01273 301060

Quantum Series Brushless DC Motors

Bearing Life Curves

QB/QS01700

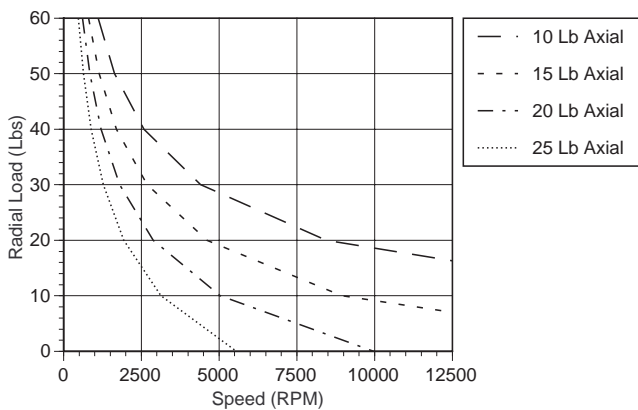
0.250 inch ID bearing, 20,000 hour life



Calculations for life rating of 20,000 hours is based upon combined radial and axial loads. Radial load applied 0.50 inches (12.7mm) from mounting face. 10 lb (44N) maximum axial preload. 8 mm ID bearing available.

QB/QS02300

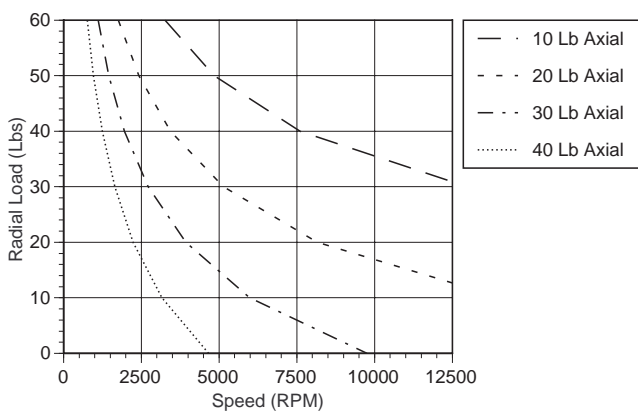
0.375 inch ID bearing, 20,000 hour life



Calculations for life rating of 20,000 hours is based upon combined radial and axial loads. Radial load applied 0.50 inches (12.7mm) from mounting face. 15 lb (66N) maximum axial preload. 0.5 inch ID bearing available. 0.250 inch shaft option utilizes 0.375 inch ID bearings

QB/QS03400

0.500 inch ID bearing, 20,000 Hour Life



Calculations for life rating of 20,000 hours is based upon combined radial and axial loads. Radial load applied 0.75 inches (19mm) from mounting face. 20 lb (88N) maximum axial preload. 0.375 inch shaft utilizes 0.500 inch ID bearing 0.625 inch ID bearing available.



Emotek Corp.
10002 E. 43rd St. So.
Tulsa, OK 74116
USA
Tel 918 627 1845
Fax 918 660 0207

Emotek UK
Box 772,
Rottingdean BN2 8ND
United Kingdom
Tel 01273 390800
Fax 01273 301060

Quantum Series Brushless DC Motors

Encoders

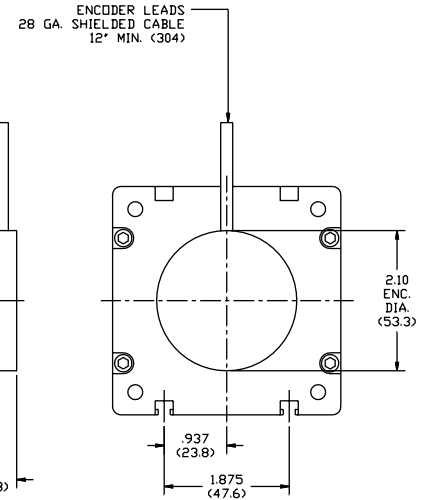
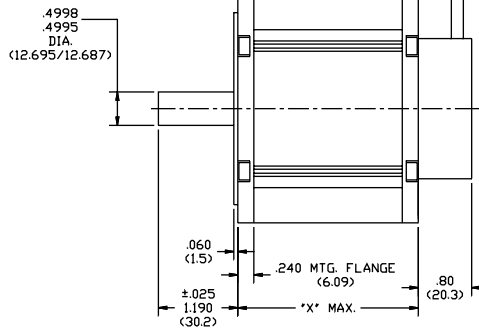
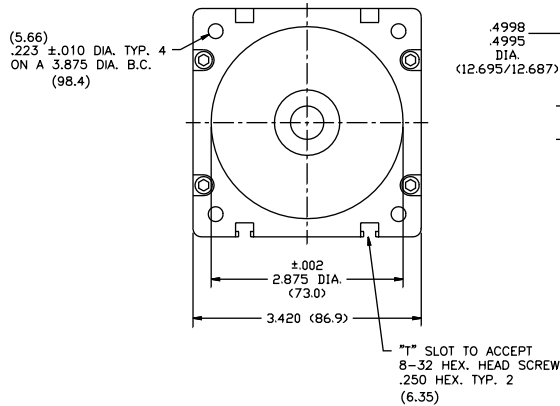
QB/QS03400 Series

MODEL NO.	LENGTH "X"
QB03400	3.01 (76.5)
QB03401	3.76 (95.5)
QB03402	4.51 (114.6)
QB03403	5.26 (133.6)

ENCODER LEAD		
FUNCTION	WITH COMMUTATION	LINE DRIVER ONLY
+5V	RED	RED
GROUND	BLACK	BLACK
CH. A	BLUE	GREEN
CH. B	GREEN	ORANGE
CH. A INV.	BLU/BLK	RED/BLK
CH. B INV.	GRN/BLK	WHT/BLK
INDEX	VIOLET	WHITE
INDEX INV.	VIO/BLK	BLUE
COMM U	BROWN	
COMM V	GRAY	
COMM. W	WHITE	

1. ENCODER WITH INDEX AND LINE DRIVER.
500, 1000, 1024, 2000 AND 2048 LINE COUNT AVAILABLE.
OPTIONAL ENCODER WITH COMMUTATION CHANNELS.

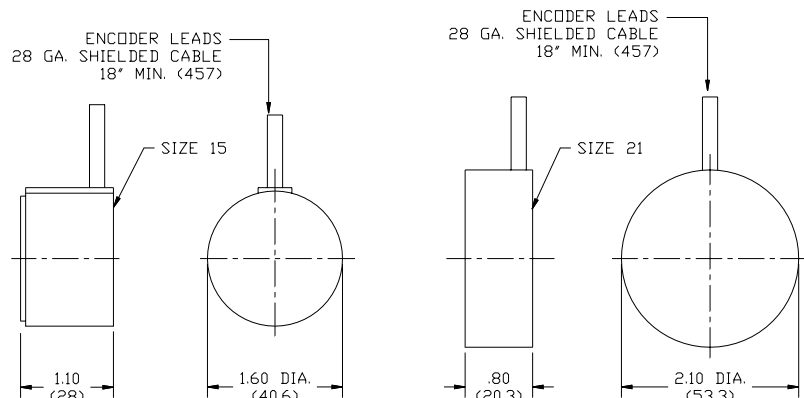
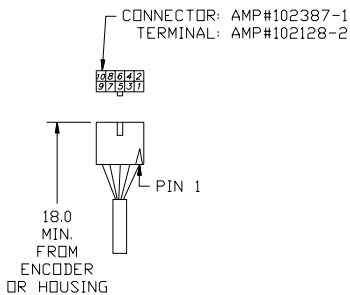
LEADWIRE - TEFLON COATED
TYPE "E" PER MIL-W-16878/4
12" MINIMUM LENGTH (304)
A) MOTOR: 16 AWG. RED(A),WHT(B),BLK(C)
B) SENSOR: 28 AWG. BLU(+),BRN(A), ORG(B)
YEL(C),GRN(GRD)



Encoder Connections

ENCODER TERMINATION			
FUNCTION	WITH COMMUTATION	LINE DRIVER ONLY	CONNECTOR
+5V	RED	RED	PIN 1
GROUND	BLACK	BLACK	PIN 10
CH. A	BLUE	GREEN	PIN 4
CH. B	GREEN	ORANGE	PIN 6
CH. A INV.	BLU/BLK	RED/BLK	PIN 3
CH. B INV.	GRN/BLK	WHT/BLK	PIN 5
INDEX	VIOLET	WHITE	PIN 7
INDEX INV.	VIO/BLK	BLUE	PIN 9
COMM U	BROWN		
COMM V	GRAY		
COMM. W	WHITE		

1. ENCODER WITH INDEX AND LINE DRIVER.
OPTIONAL ENCODER WITH COMMUTATION CHANNELS.
LINE COUNTS AVAILABLE:
SIZE 15: 200, 400, 500, 1000, 1024
SIZE 21: 500, 1000, 1024, 2000, 2048



Hathaway
Emoteq Corp

Emoteq Corp.
10002 E. 43rd St. So.
Tulsa, OK 74116
USA
Tel 918 627 1845
Fax 918 660 0207

Emoteq UK
Box 772,
Rottingdean BN2 8ND
United Kingdom
Tel 01273 390800
Fax 01273 301060

Quantum Series Brushless DC Motors

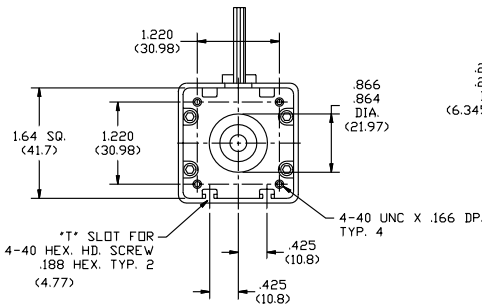
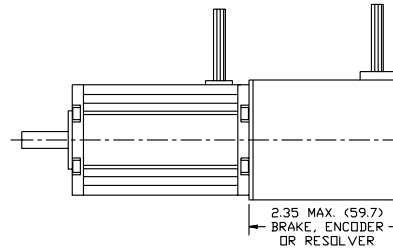
Rugged Housings

QB/QS01700 Series

MODEL NO.	"X"
QB01700	2.125 (54)
QB01701	2.625 (66.7)
QB01702	3.125 (79.4)
QB01703	3.625 (92.1)

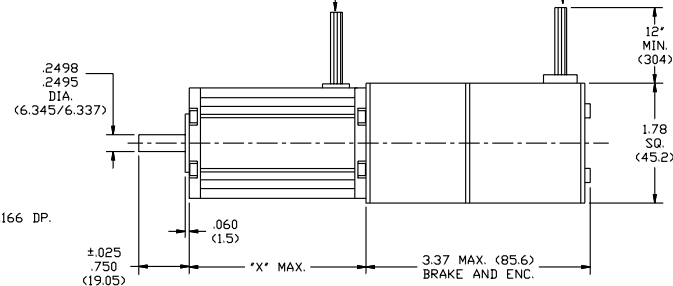
ENCODER LEAD		
FUNCTION	WITH COMMUTATION	LINE DRIVER ONLY
+5V	RED	RED
GROUND	BLACK	BLACK
CH. A	BLUE	GREEN
CH. B	GREEN	ORANGE
CH. A INV.	BLU/BLK	RED/BLK
CH. B INV.	GRN/BLK	WHT/BLK
INDEX	VIOLET	WHITE
INDEX INV.	VIO/BLK	BLUE
COMM U	BROWN	
COMM V	GRAY	
COMM. W	WHITE	

- ENCODER WITH INDEX AND LINE DRIVER.
200, 400, 500, 1000, 1024 LINE COUNT AVAILABLE.
OPTIONAL ENCODER WITH COMMUTATION CHANNELS.
- BRAKE: POWER-OFF FAILSAFE BRAKE, 24 VDC.
1 IN-LB MIN. HOLDING TORQUE.
- CONSULT FACTORY FOR RESOLVER SPECIFICATIONS.



LEADWIRE - TEFLON COATED
TYPE "E" PER MIL-W-16878/4
A) MOTOR: #24 AWG. RED(A),WHT(B),BLK(C)
B) SENSOR: #28 AWG. BLU(+),BRN(A),ORG(B)
YEL(C),GRN(GRD)

ENCODER/BRAKE LEADS
ENC: 24 AWG. SHIELDED CABLE
BRAKE: 24 AWG. WHITE

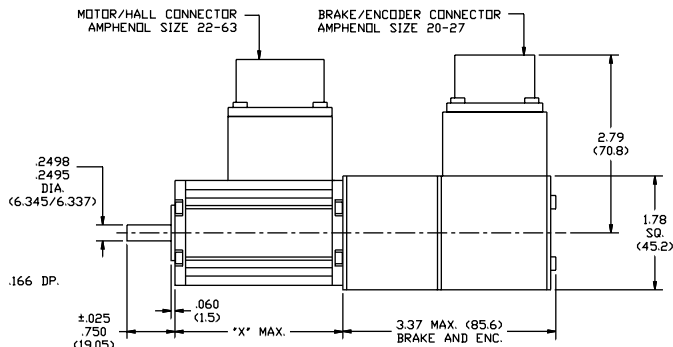
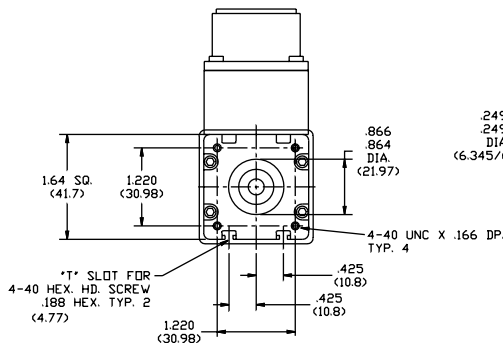
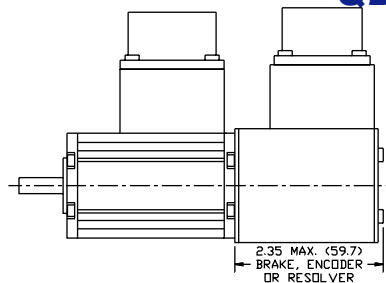


MODEL NO.	"X"
QB01700	2.125 (54)
QB01701	2.625 (66.7)
QB01702	3.125 (79.4)
QB01703	3.625 (92.1)

22-63 CONNECTION		20-27 CONNECTION	
DESC.	PIN	DESC.	PIN
PHASE A	A	+5V	A
PHASE B	B	GRD.	B
PHASE C	C	CH. A	C
+ VDC	E	CH. B	D
GRD.	F	CH. A INV.	E
HALL A	H	CH. B INV.	F
HALL B	J	INDEX	G
HALL C	K	INDEX INV.	H
SHIELD (OPT)	N	COMM. U (OPT)	I
CASE GROUND (OPT)	D	COMM. V (OPT)	J
THERMAL SENSOR (OPT)	L	COMM. W (OPT)	K
THERMAL SENSOR (OPT)	M	SHIELD (OPT)	N
BRAKE +	L		
BRAKE -	M		

- ENCODER WITH INDEX AND LINE DRIVER.
200, 400, 500, 1000, 1024 LINE COUNT AVAILABLE.
OPTIONAL ENCODER WITH COMMUTATION CHANNELS.
- BRAKE: POWER-OFF FAILSAFE BRAKE, 24 VDC.
1 IN-LB MIN. HOLDING TORQUE.
- CONSULT FACTORY FOR RESOLVER SPECIFICATIONS.

QB/QS01700 Series



Hathaway
Emoteq Corp

Emoteq Corp.
10002 E. 43rd St. So.
Tulsa, OK 74116
USA
Tel 918 627 1845
Fax 918 660 0207
16

Emoteq UK
Box 772,
Rottingdean BN2 8ND
United Kingdom
Tel 01273 390800
Fax 01273 301060

Quantum Series Brushless DC Motors

Rugged Housings

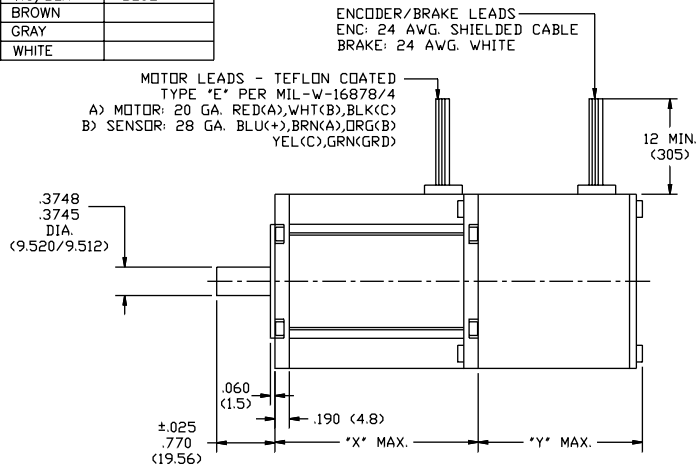
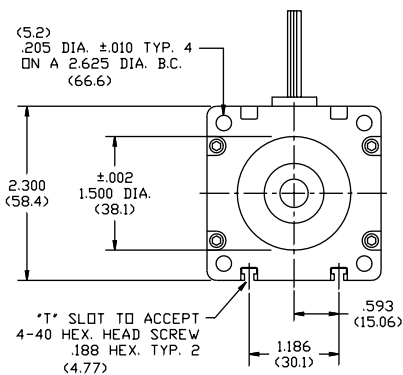
QB/QS02300 Series

MODEL NO.	"X"
QB02300	2.800 (71.12)
QB02301	3.550 (90.17)
QB02302	4.300 (109.22)
QB02303	5.050 (128.27)
QB02304	5.800 (147.3)

OPTION	"Y"
ENCODER	2.19 (55.6)
BRAKE	2.19 (55.6)
RESOLVER	2.19 (55.6)
BRAKE/ENC	3.19 (81)

ENCODER LEAD		
FUNCTION	WITH COMMUTATION	LINE DRIVER ONLY
+5V	RED	RED
GROUND	BLACK	BLACK
CH. A	BLUE	GREEN
CH. B	GREEN	ORANGE
CH. A INV.	BLU/BLK	RED/BLK
CH. B INV.	GRN/BLK	WHT/BLK
INDEX	VIOLET	WHITE
INDEX INV.	VIO/BLK	BLUE
COMM U	BROWN	
COMM V	GRAY	
COMM. W	WHITE	

- ENCODER, WITH INDEX AND LINE DRIVER.
200, 400, 500, 1000 AND 1024 LINE COUNT AVAILABLE.
OPTIONAL ENCODER WITH COMMUTATION CHANNELS.
- BRAKE: POWER-OFF FAILSAFE BRAKE, 24 VDC.
5 IN-LB AND 10 IN-LB HOLDING TORQUE AVAILABLE.
- CONSULT FACTORY FOR RESOLVER SPECIFICATIONS.



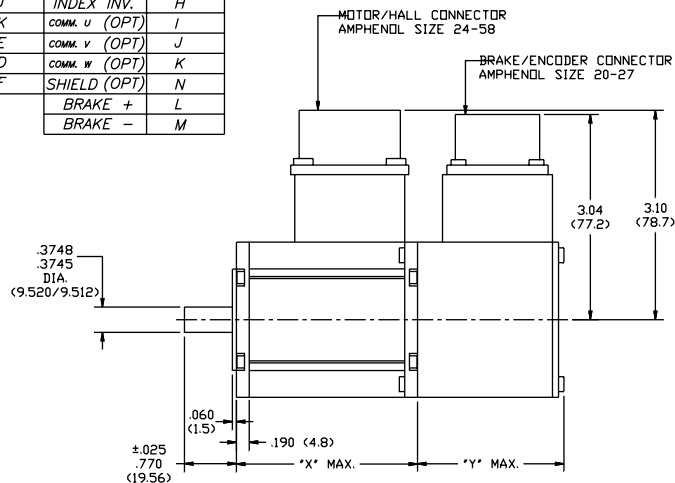
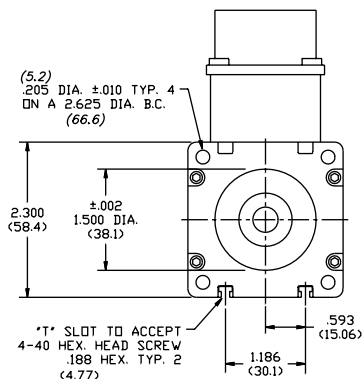
QB/QS02300 Series

MODEL NO.	"X"
QB02300	2.800 (71.12)
QB02301	3.550 (90.17)
QB02302	4.300 (109.22)
QB02303	5.050 (128.27)
QB02304	5.800 (147.3)

OPTION	"Y"
ENCODER	2.19 (55.6)
BRAKE	2.19 (55.6)
RESOLVER	2.19 (55.6)
BRAKE/ENC	3.19 (81)

24-58 CONNECTION		20-27 CONNECTION	
DESC.	PIN	DESC.	PIN
PHASE A	A	+5V	A
PHASE B	B	GRD.	B
PHASE C	C	CH. A	C
+ VDC	M	CH. B	D
GRD.	N	CH. A INV.	E
HALL A	P	CH. B INV.	F
HALL B	H	INDEX	G
HALL C	J	INDEX INV.	H
SHIELD	K	COMM. U (OPT)	I
CASE GROUND (OPT)	E	COMM. V (OPT)	J
THERMAL SENSOR (OPT)	D	COMM. W (OPT)	K
THERMAL SENSOR (OPT)	F	SHIELD (OPT)	N
		BRAKE +	L
		BRAKE -	M

- ENCODER, WITH INDEX AND LINE DRIVER.
200, 400, 500, 1000 AND 1024 LINE COUNT AVAILABLE.
OPTIONAL ENCODER WITH COMMUTATION CHANNELS.
- BRAKE: POWER-OFF FAILSAFE BRAKE, 24 VDC.
5 IN-LB AND 10 IN-LB HOLDING TORQUE AVAILABLE.
- CONSULT FACTORY FOR RESOLVER SPECIFICATIONS.



Hathaway
Emoteq Corp

Emoteq Corp.
10002 E. 43rd St. So.
Tulsa, OK 74116
USA
Tel 918 627 1845
Fax 918 660 0207

Emoteq UK
Box 772,
Rottingdean BN2 8ND
United Kingdom
Tel 01273 390800
Fax 01273 301060

Quantum Series Brushless DC Motors

Rugged Housings

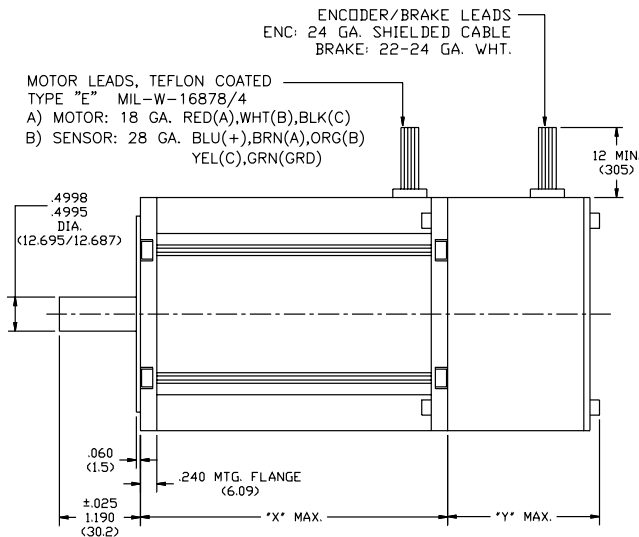
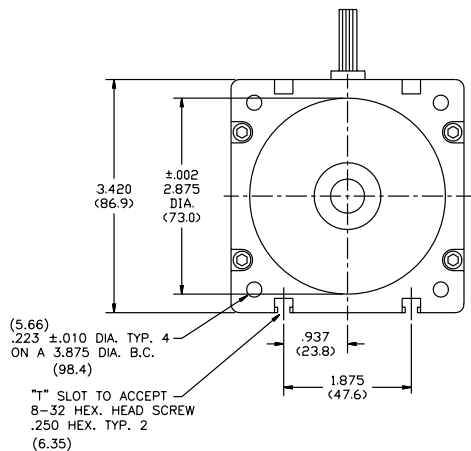
QB/QS03400 Series

MODEL NO.	"X"
QB03400	3.01 (76.5)
QB03401	3.76 (95.5)
QB03402	4.51 (114.6)
QB03403	5.26 (133.6)

OPTION	"Y"
ENCODER	2.26 (57.4)
BRAKE	2.26 (57.4)
RESOLVER	2.26 (57.4)
BRAKE/ENC.	2.96 (75.2)

ENCODER LEAD		
FUNCTION	WITH COMMUTATION	LINE DRIVER ONLY
+5V	RED	RED
GROUND	BLACK	BLACK
CH. A	BLUE	GREEN
CH. B	GREEN	ORANGE
CH. A INV.	BLU/BLK	RED/BLK
CH. B INV.	GRN/BLK	WHT/BLK
INDEX	VIOLET	WHITE
INDEX INV.	VIO/BLK	BLUE
COMM U	BROWN	
COMM V	GRAY	
COMM. W	WHITE	

- ENCODER WITH INDEX AND LINE DRIVER.
200, 400, 500, 1000 AND 1024 LINE COUNTS AVAILABLE.
OPTIONAL ENCODER WITH COMMUTATION CHANNELS.
- BRAKE: POWER-OFF FAILSAFE BRAKE, 24 VDC.
5 IN-LB, 10 IN-LB AND 40 IN-LB HOLDING TORQUE AVAILABLE.
- CONSULT FACTORY FOR RESOLVER SPECIFICATIONS.



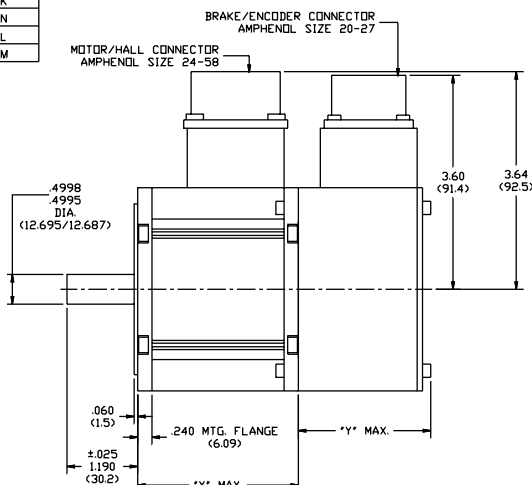
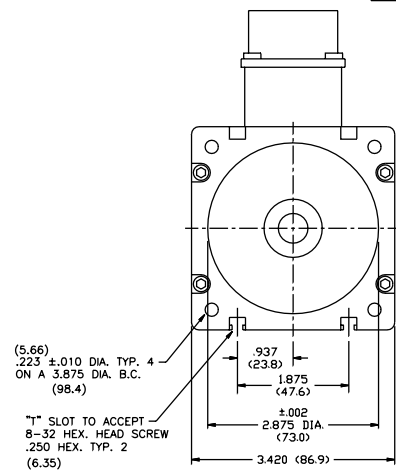
MODEL NO.	LENGTH "X"
QB03400	3.01 (76.5)
QB03401	3.76 (95.5)
QB03402	4.51 (114.6)
QB03403	5.26 (133.6)

OPTION	LENGTH "Y"
ENCODER	2.26 (57.4)
BRAKE	2.26 (57.4)
RESOLVER	2.26 (57.4)
BRAKE/ENC.	2.96 (75.2)

24-58 CONNECTION		20-27 CONNECTION	
DESC.	PIN	DESC.	PIN
PHASE A	A	+ 5V	A
PHASE B	B	GRD.	B
PHASE C	C	CH. A	C
+ VDC	M	CH. B	D
GRD.	N	CH. A INV.	E
HALL A	P	CH. B INV.	F
HALL B	H	INDEX	G
HALL C	J	INDEX INV.	H
SHIELD (OPT)	K	COMM. U (OPT)	I
CASE GROUND (OPT)	E	COMM. V (OPT)	J
THERMAL SENSOR (OPT)	D	COMM. W (OPT)	K
THERMAL SENSOR (OPT)	F	SHIELD (OPT)	N
		BRAKE +	L
		BRAKE -	M

- ENCODER WITH INDEX AND LINE DRIVER.
200, 400, 500, 1000 AND 1024 LINE COUNT AVAILABLE.
OPTIONAL ENCODER WITH COMMUTATION CHANNELS.
- BRAKE: POWER-OFF FAILSAFE BRAKE, 24 VDC.
5 IN-LB, 10 IN-LB AND 40 IN-LB HOLDING TORQUE AVAILABLE.
- CONSULT FACTORY FOR RESOLVER SPECIFICATIONS.

QB/QS03400 Series



Hathaway
Emoteq Corp

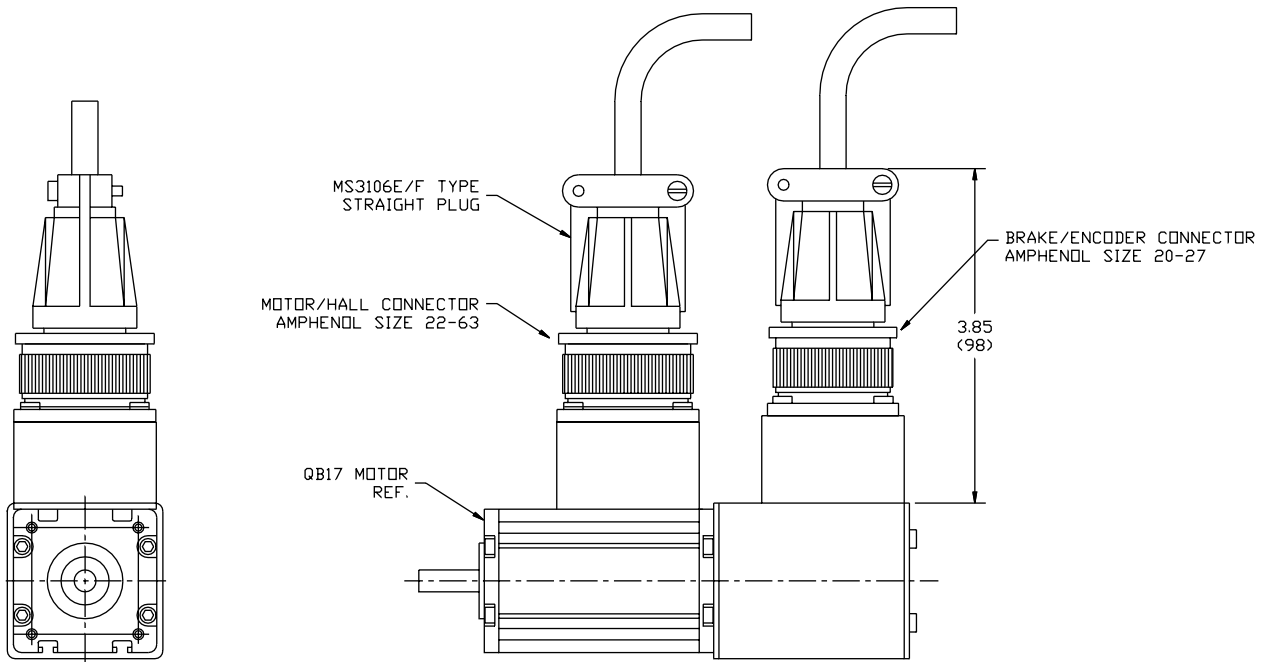
Emoteq Corp.
10002 E. 43rd St. So.
Tulsa, OK 74116
USA
Tel 918 627 1845
Fax 918 660 0207
18

Emoteq UK
Box 772,
Rottingdean BN2 8ND
United Kingdom
Tel 01273 390800
Fax 01273 301060

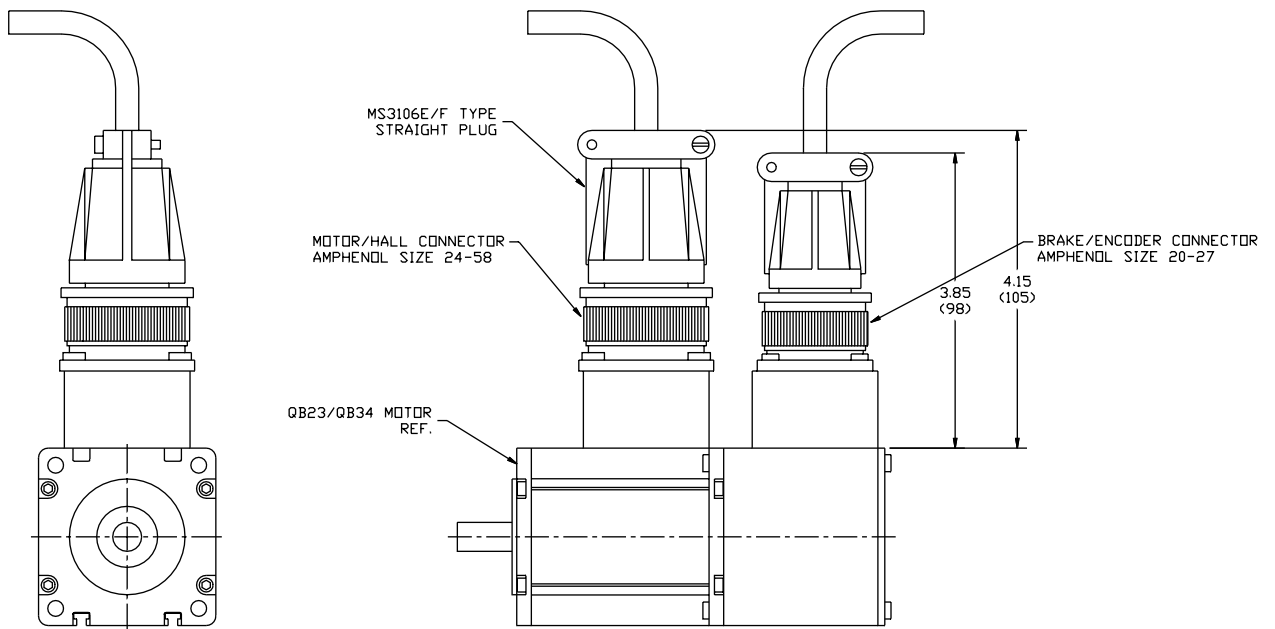
Quantum Series Brushless DC Motors

Mating Connectors

QB/QS01700 Series



QB/QS02300/3400 Series



Hathaway
Emoteq Corp

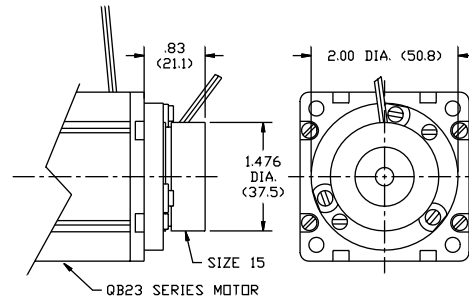
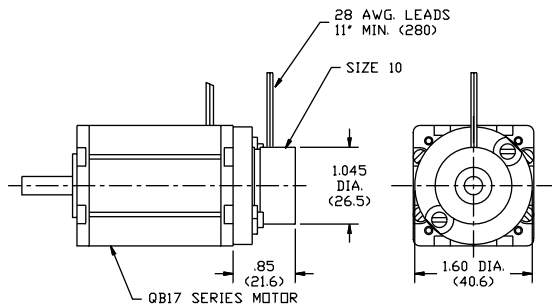
Emoteq Corp.
10002 E. 43rd St. So.
Tulsa, OK 74116
USA
Tel 918 627 1845
Fax 918 660 0207

Emoteq UK
Box 772,
Rottingdean BN2 8ND
United Kingdom
Tel 01273 390800
Fax 01273 301060

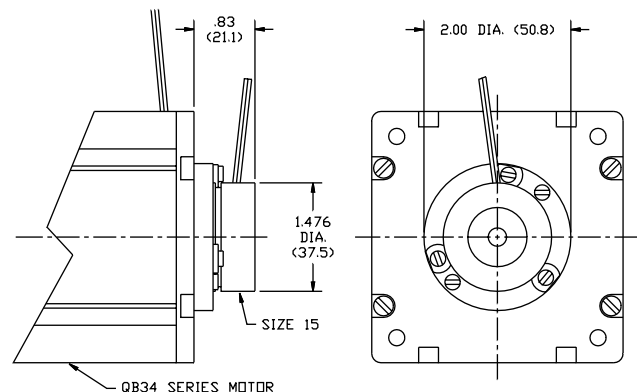
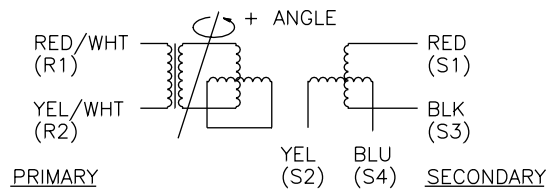
Quantum Series Brushless DC Motors

Brakes & Resolvers

Resolver Options



RESOLVER SIZE 10 AND 15	
INPUT VOLTAGE	AC 7Vrms 10 KHZ
INPUT CURRENT	60 mA MAX.
TEMP. RANGE	-55° TO 155°C
MAX. OPERATING SPEED	10000 RPM



Quantum Series Brushless DC Motors

Holding Brake Options

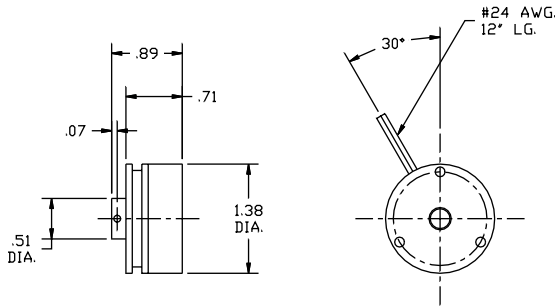


FIG. 1

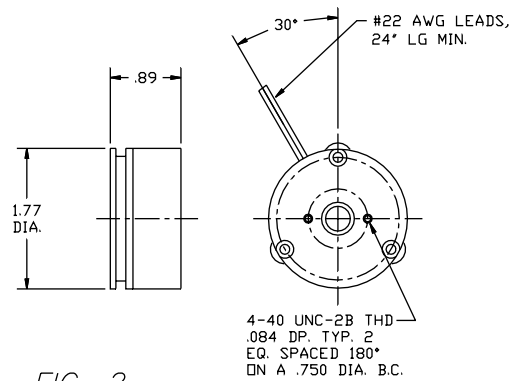


FIG. 2

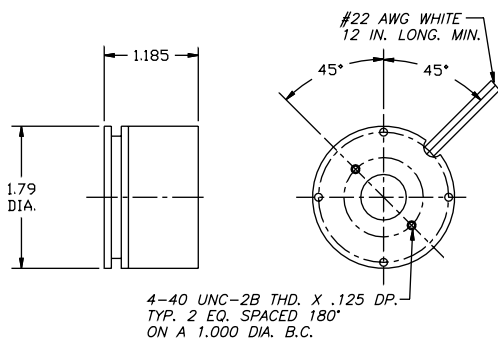


FIG. 3

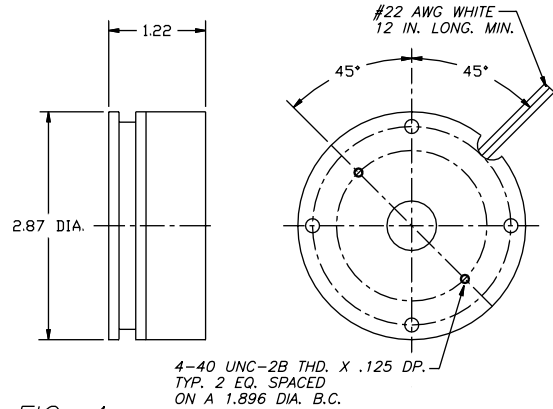


FIG. 4

BRAKE PART NO.	9760196 FIG. 1	9760183 FIG. 2	9760184 FIG. 3	9760185 FIG. 4
STATIC TORQUE: LB.IN(Nm) Min	1 (0.11)	5 (0.56)	10(1.12)	40(4.51)
COIL: VOLTAGE (DC)	24	24	24	24
RESISTANCE (OHMS) $\pm 10\%$	138	82.3	52.5	36
WATTS (MAX)	-	7.0	11	16
PULL IN VOLTAGE (MAX. DC)	18	18	16	16

1. ENCODERS CAN BE MOUNTED TO EACH BRAKE EXCEPT 9760196. SEPARATE ENCODER MOUNTING PLATE REQUIRED ON BRAKES 9760184, 185

Size Constants

These parameters are dependent upon the size and shape of the motor but are largely independent of the winding used. However, special designs incorporating different lamination and magnet materials as well as design modifications such as increased magnetic air gaps can change these parameters. In such instances, a specific set of design data will be provided.

Maximum Continuous Stall Torque (T_c) is the amount of torque produced at zero speed which results in a 100°C rise in temperature. Generally, the highest operating temperature that should be allowed is 150°C and is a combination of the ambient temperature and the temperature rise for a given operating condition.

Maximum Rated Torque (T_R) is the amount of torque that the motor can produce without danger of demagnetizing the rotor. This torque is only available for short durations. Also, it may not be possible to produce the Maximum Rated Torque because of limitations of voltage and current (see Peak Torque).

Motor Constant (K_M) is the ratio of the peak torque to the square root of the input power at stall with 25°C ambient temperature. This ratio is useful during the initial selection of a motor because it indicates the ability of the motor to convert electrical power into torque.

$$K_M = T_P (\text{Peak Torque}) / \sqrt{P_P (\text{Peak Input Power})}$$

or

$$K_M = K_T (\text{Torque Constant}) / \sqrt{R_M (\text{Terminal Resistance})}$$

Electrical Time Constant (t_e) is the ratio of inductance L_M in Henries, to the resistance R_M in Ohms. This is the inductance and resistance as measured across any two phases in a delta or wye configuration.

$$T_E = L_M / R_M$$

Mechanical Time Constant (t_m) is the time required to reach 63.2% of the motors maximum speed after the application of constant DC voltage through the commutation electronics, ignoring friction, windage, and core losses.

$$T_M = J_M * R_M / K_T * K_B$$

Thermal Resistance (TPR) correlates winding temperature rise to the average power dissipated in the stator winding. The published TPR assumes that a housed motor is mounted to an aluminum heatsink of specific dimensions. Additional cooling from forced air, water jacketing, or increased heatsinking decreases the motor Thermal Resistance allowing higher power outputs than the published data.

Heatsink Sizes:

QB01700 Series 6 x 6 x 0.25 inches (152x152x6.3 mm)
QB02300 Series 8 x 8 x 0.25 inches (203x203x6.3 mm)
QB03400 Series 10x10x0.25 inches (254x254x6.3 mm)
QB05600 Series 12x12x0.50 inches (305x305x12.7mm)

Viscous Damping (F_v) gives an indication of the torque lost due to B.E.M.F. in the motor when the source impedance is zero. F_0 value can be represented as $F_0 = K_T * K_B / R_M$

Maximum Cogging Torque (T_c) is principally the static friction torque felt as the motor is rotated at low speed. The published value does not include the bearing friction of a housed motor.

Mechanical Data

Rotor inertia (J_M) is the moment of inertia of the rotor about its axis of rotation.

Motor Weight (W_M) is the weight of the standard motor.

Number of Poles (N_p) is the number of permanent magnet poles of the rotor. For the QB Series this is generally a total of six (three north and three south).

Winding Constants

The winding constants are the parameters that vary with the number of wire turns per coil and the wire size. These parameters are collected under a alphabetical winding designation. A single frame size and length of motor will have several different windings. Special windings receive new designations in the sequence by which they are designed and released to production.

Design Voltage (V_p) is the nominal voltage required to

Quantum Series Brushless DC Motors

Connections

produce the peak torque when the rotor speed is zero and the winding temperature is 25°C. As such, V_p is the product of I_p and R_M . At any temperature greater than 25°C, the required voltage to produce peak torque increases due to the increase in winding resistance. The design voltage is not a limit but a reference point for the data.

Peak Torque (T_p) is the nominal value of developed torque with the rated current I_p applied to the windings. For each winding specified the product of peak current (I_p) and nominal torque sensitivity (K_T) gives T_p unless the maximum rated torque (T_R) is reached.

Peak Current (I_p) is the rated current used to obtain the nominal peak torque from the motor with nominal torque sensitivity (K_T). I_p is generally the design voltage divided by the terminal resistance (R_M).

Torque Sensitivity (K_T) is the ratio of the developed torque to the applied current for a specific winding. K_T is related to the BEMF Constant K_B .

No Load Speed (S_{NL}) is the theoretical no load speed of the motor with the design voltage applied.

BEMF Constant (K_B) is the ratio of voltage generated in the winding to the speed of the rotor. K_B is proportional to K_T .

Terminal Resistance (R_M) is the winding resistance measured between any two leads of the winding in either a delta or wye configuration at 25°C.

Terminal Inductance (L_M) is the winding inductance measured between any two leads of the winding in either delta or wye configuration at 25°C.

Configuration Drawings

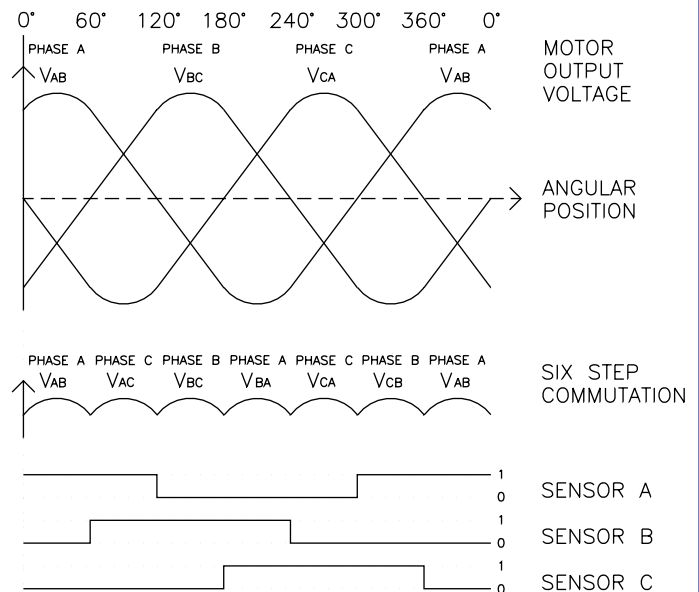
The drawings reflect the standard configurations for both the housed and frameless motors. Encoder and housing options are also detailed but customers may specify mechanical modifications such as shaft diameters and lengths as well as special mounting and cabling requirements.

Frameless motors are supplied with single stack rotor hubs for customer stacking to required rotor length. The Hall effects are integral to the stator assembly.

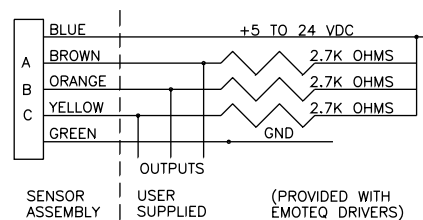
Motor Connections and Commutation Logic

MOTOR EXCITATION SEQUENCE AND SENSOR OUTPUT LOGIC FOR CW ROTATION VIEWING LEADWIRE END.

EXCITATION STEP		1	2	3	4	5	6	1
MOTOR LEADS	(RED) A	+	+	-	-	+	+	
	(WHT) B	-	+	+	-	-	+	
	(BLK) C	-	-	+	+	-	-	
SENSOR OUTPUTS	(BRN) A	1	1	0	0	1	1	
	(ORG) B	0	1	1	1	0	0	
	(YEL) C	0	0	1	1	1	0	



HALL EFFECT CONNECTION DIAGRAM



Emotek Corp.
10002 E. 43rd St. So.
Tulsa, OK 74116
USA
Tel 918 627 1845
Fax 918 660 0207

Emotek UK
Box 772,
Rottingdean BN2 8ND
United Kingdom
Tel 01273 390800
Fax 01273 301060

Quantum Series

Sales Offices

Brushless DC Motors

Emoteq Corporation **www.emoteq.com**

Emoteq Corp.

10002 E. 43rd St. So.
Tulsa, OK 74146
USA
Tel 918 627 1845
Tel 800 221 7572
Fax 918 660 0207

Emoteq UK Ltd

Box 772,
Rottingdean BN2 8ND
United Kingdom
Tel 01273 390800
Fax 01273 301060

Please contact our US or UK offices for information on local company applications engineering assistance.
Additionally, you may visit our website Emoteq.com for contact information.