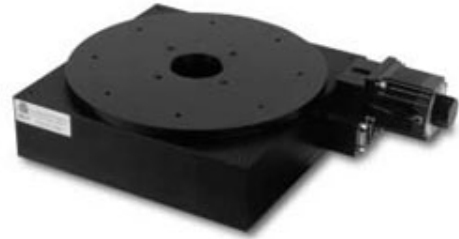
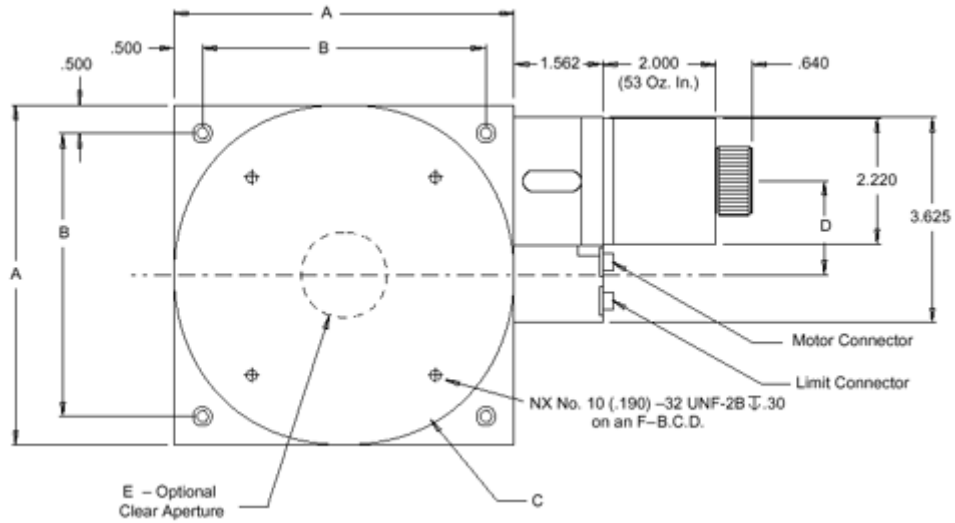


# RTR-6™ Crossed Roller Bearing Rotary Table

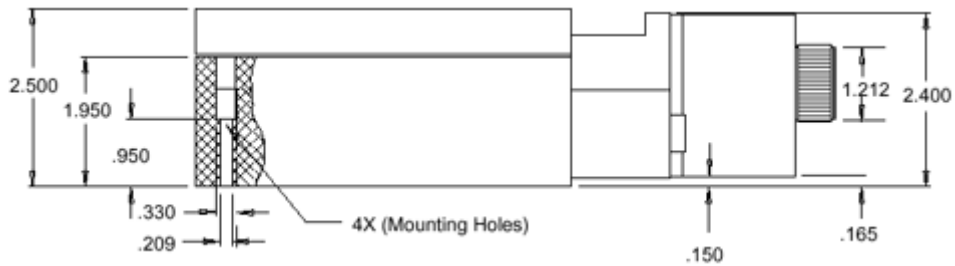


## Product Dimensions

### Dimensions - Top View



### Dimensions - Side View



A	B	C	D	E	F	N
6"	5"	6"	1.66"	1.5"	5"	4"

## RTR-6™ Crossed Roller Bearing Rotary Table

### Specifications

Diameter (inches)	6	
Worm/Gear Ratio Resolution <sup>1</sup>	180:1 0.001	36:1 0.005
Accuracy	0.05	
Bidirectional Repeatability (degree)	0.007	
Vertical Runout (µm)	<25	
Radial Runout (µm)	20	
Axis Runout (degree)	0.03	
Load Capacity (kg)	30	
Radial Load Capacity (kg)	7	
Maximum Speed	15 rps at worm	
Total Mass (kg)	4.1	

### Configurations<sup>2</sup>

Motor	Stepper (oz-in)	400 step/rev 200 step/rev	118, Others 53, 100,, Others
	Servo		brush, brushless

### Options

Encoder	Rotary (counts/rev.)	2000, 4000
---------	----------------------	------------

<sup>1</sup> Resolution assuming ±10 microstep drive and standard 200 step/rev. stepping motor, or servo motor with 2000 count/rev. rotary encoder.

<sup>2</sup> Standard configuration is highlighted.

**For Further Information Contact ....**

Heason Technologies Group Ltd  
 Tel: +44(0)1403 755800  
 Fax: +44(0)1403 755810  
 Email: sales@heason.com

**Heason**  
Technologies Group

Freephone 0800 374903 [www.heason.com](http://www.heason.com)