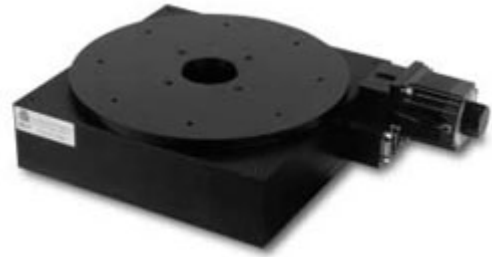
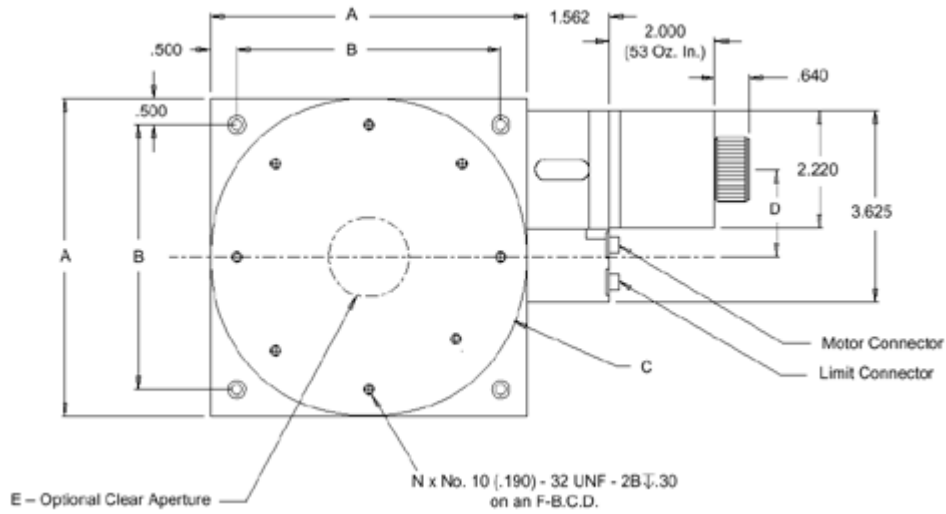


RTR-10™ Crossed Roller Bearing Rotary Table

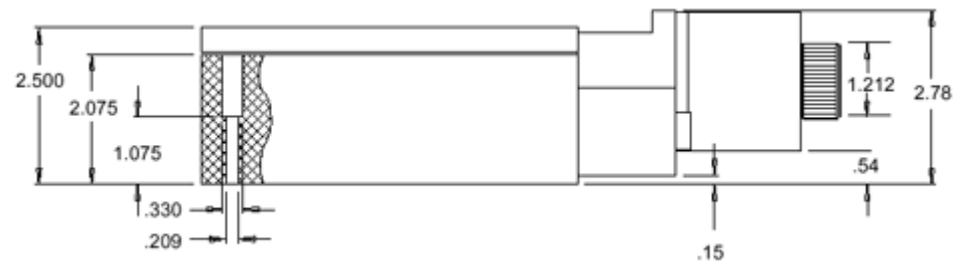


Product Dimensions

Dimensions - Top View



Dimensions - Side View



A	B	C	D	E	F	N
10"	9"	10"	3.03"	3.0"	8"	8"

RTR-10™ Crossed Roller Bearing Rotary Table

Specifications

Diameter (inches)	10
Worm/Gear Ratio Resolution ¹	180:1 0.001
Accuracy	0.05
Bidirectional Repeatability (degree)	0.005
Vertical Runout (µm)	<25
Radial Runout (µm)	20
Axis Runout (degree)	0.03
Load Capacity (kg)	45
Radial Load Capacity (kg)	12
Maximum Speed	15 rps at worm
Total Mass (kg)	9.1

Configurations²

Motor	Stepper (oz-in)	400 step/rev 200 step/rev	118, Others 53, 100, Others
	Servo		brush, brushless

Options

Encoder	Rotary (counts/rev.)	2000, 4000
---------	----------------------	------------

¹ Resolution assuming ±10 microstep drive and standard 200 step/rev. stepping motor, or servo motor with 2000 count/rev. rotary encoder.

² Standard configuration is highlighted.

For Further Information Contact

Heason Technologies Group Ltd
 Tel: +44(0)1403 755800
 Fax: +44(0)1403 755810
 Email: sales@heason.com

Heason
Technologies Group

Freephone 0800 374903 www.heason.com