

For Further Information Contact

Heason Technologies Group Ltd

Tel: +44(0)1403 755800

Fax: +44(0)1403 755810

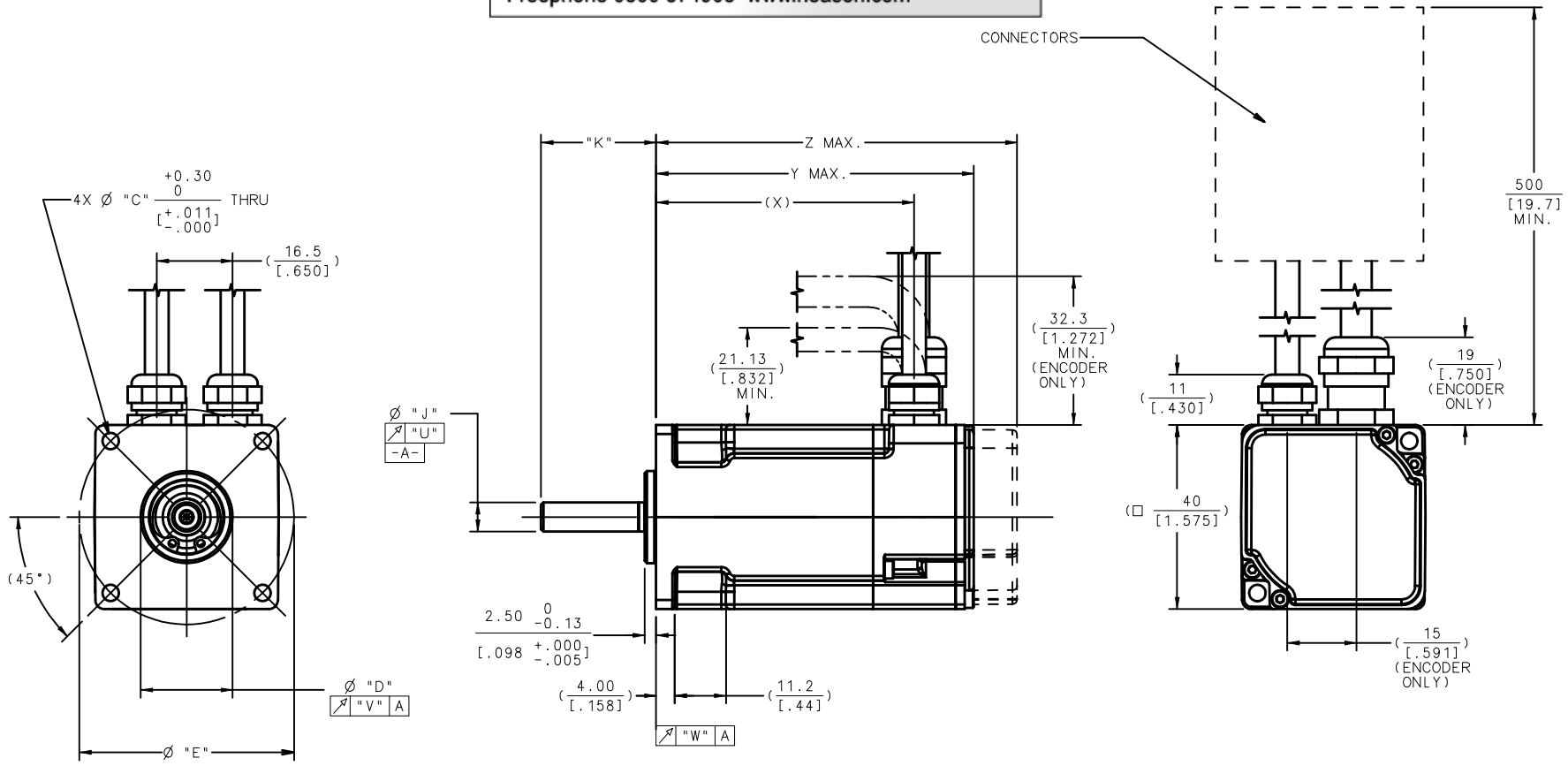
Email: sales@heason.com

Freephone 0800 374903 www.heason.com

Heason
Technologies Group

REV. NO.	50	DRAWING NUMBER	M	AKM1
----------	----	----------------	---	------

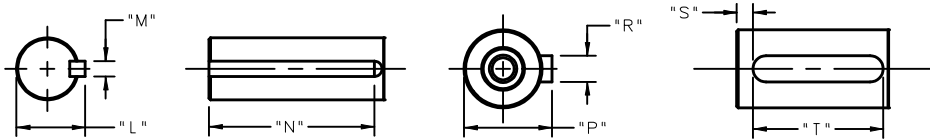
REV. NO.	REVISION	DATE	REVISION	CHK'D BY	CHK'D BY



MOUNTING CODE	"C"	"D"	"E"	"F"	"H"	"J"	"K"	"L"	"M"	"N"	"P"	"R"	"S"	"T"	"U"	"V"	"W"
AK	$\frac{4.30}{[.169]}$	$\frac{30}{[1.1811]} \begin{smallmatrix} -0.021 \\ +0.000 \end{smallmatrix} h7$	$\frac{46}{[1.811]}$	N/A	N/A	$\frac{8}{[.3150]} \begin{smallmatrix} -0.015 \\ -0.000 \end{smallmatrix} h7$	$\frac{25.0}{[.984]}$	$\frac{9.20}{[.362]} \begin{smallmatrix} -0.13 \\ -0.000 \end{smallmatrix}$	$\frac{3}{[.1181]} \begin{smallmatrix} -0.025 \\ -0.000 \end{smallmatrix}$	$\frac{14}{[.551]} \begin{smallmatrix} 0 \\ -0.000 \end{smallmatrix}$	N/A	N/A	N/A	N/A	?	?	?
AN	$\frac{4.30}{[.169]}$	$\frac{30}{[1.1811]} \begin{smallmatrix} -0.021 \\ +0.000 \end{smallmatrix} h7$	$\frac{46}{[1.811]}$	N/A	N/A	$\frac{8}{[.3150]} \begin{smallmatrix} -0.015 \\ -0.000 \end{smallmatrix} h7$	$\frac{25.0}{[.984]}$	N/A	N/A	N/A	N/A	N/A	N/A	N/A	?	?	?
BN	$\frac{3.56}{[.140]}$	$\frac{20.015}{[.7880]} \pm 0.025$	$\frac{46.69}{[1.838]}$	N/A	N/A	$\frac{6.350}{[.2500]} \begin{smallmatrix} 0 \\ -0.012 \\ -0.000 \end{smallmatrix}$	$\frac{25.0}{[.984]}$	N/A	N/A	N/A	N/A	N/A	N/A	N/A	?	?	?
CK	$\frac{3.40}{[.134]}$	$\frac{30}{[1.1811]} \begin{smallmatrix} -0.021 \\ +0.000 \end{smallmatrix} h7$	$\frac{45}{[1.772]}$	N/A	N/A	$\frac{8}{[.3150]} \begin{smallmatrix} -0.015 \\ -0.000 \end{smallmatrix} h7$	$\frac{25.0}{[.984]}$	$\frac{9.20}{[.362]} \begin{smallmatrix} -0.13 \\ -0.000 \end{smallmatrix}$	$\frac{3}{[.1181]} \begin{smallmatrix} -0.025 \\ -0.000 \end{smallmatrix}$	$\frac{14}{[.551]} \begin{smallmatrix} 0 \\ -0.000 \end{smallmatrix}$	N/A	N/A	N/A	N/A	?	?	?
CN	$\frac{3.40}{[.134]}$	$\frac{30}{[1.1811]} \begin{smallmatrix} -0.021 \\ +0.000 \end{smallmatrix} h7$	$\frac{45}{[1.772]}$	N/A	N/A	$\frac{8}{[.3150]} \begin{smallmatrix} -0.015 \\ -0.000 \end{smallmatrix} h7$	$\frac{25.0}{[.984]}$	N/A	N/A	N/A	N/A	N/A	N/A	N/A	?	?	?

(X)	Y MAX.	Z MAX. (W/SFD OR ENCODER)	MODEL
$\frac{56.1}{[2.21]}$	$\frac{69.6}{[2.74]}$	$\frac{79.0}{[3.82]}$	M11
$\frac{75.1}{[2.96]}$	$\frac{88.6}{[3.49]}$	$\frac{98.0}{[3.86]}$	M12
$\frac{94.1}{[3.70]}$	$\frac{107.6}{[4.24]}$	$\frac{117.0}{[4.61]}$	M13

KEYWAY DETAILS



CAUTION: METRIC DRAWING - ENGLISH DIMENSIONS ARE REFERENCE ONLY

TOLERANCES APPLY TO DESIGN UNITS. CONVERSIONS ARE ONLY FOR REFERENCE. UNLESS NOTED TOLERANCES ARE:	SCALE 1:5	DWG SIZE C	THIRD ANGLE PROJECTION	DRAWN	PMH	06/27/03	REPLACES	RELEASE NO.
DESIGN UNITS ONE PLACE TWO PLACES	METRIC DIM mm	CUSTOMARY DIM in./ft.		CHECK				XXXXXX
ANGLES MACHINED SURFACE FINISH	X.X X.XX	TOL. 0.3 / .01 0.13 / .005						
DIMENSIONS ARE TO BE MET BEFORE PROTECTIVE COATINGS ARE APPLIED			THIS DRAWING COVERS A PROPRIETARY ITEM AND IS THE PROPERTY OF DANAEHER. THIS DRAWING IS NOT TO BE COPIED WITHOUT PRIOR APPROVAL.			CATALOG LISTING		
KOLLMORGEN			TITLE AKM1 STANDARD OUTLINE			CUSTOMER AKM1		