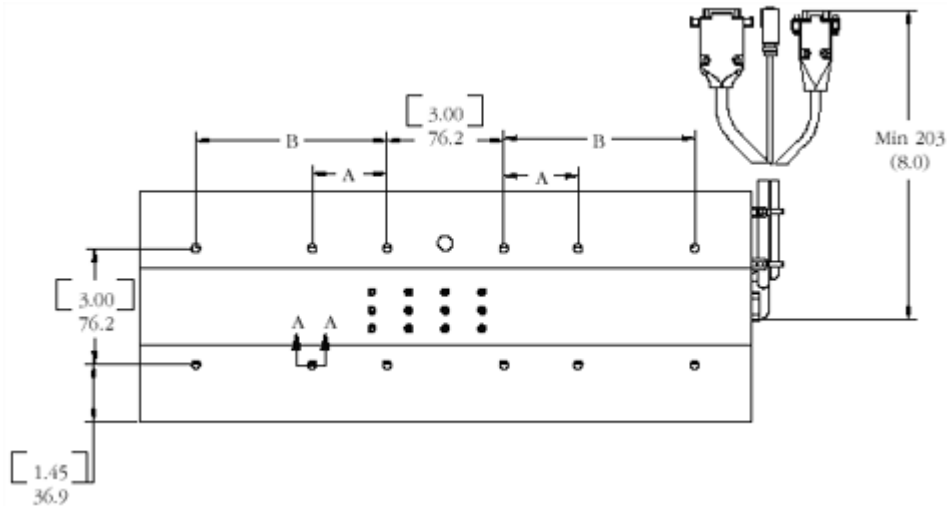
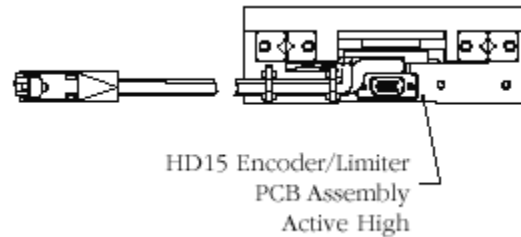


MAG-IC-150™ Moving Magnet Linear Motor Stage

Dimensions - Bottom View



Dimensions - End View



For Further Information Contact

Heason Technologies Group Ltd

Tel: +44(0)1403 755800

Fax: +44(0)1403 755810

Email: sales@heason.com

Freephone 0800 374903 www.heason.com

Heason
Technologies Group

<http://www.danahermotion.com/>

MAG-IC-150™ Moving Magnet Linear Motor Stage

Specifications

Travel (inches)	150
Accuracy (µm)	8
Resolution Options (µm)	1, 0.5, 0.1, 0.05
Bi-directional Repeatability (arc-seconds)	±1 count
Maximum Acceleration (m/sec)	50
Maximum Velocity (m/sec)	5
Load Capacity (kg) ¹	75
Mass (kg)	Moving Total 3 5.5
Pitch & Yaw (arc-seconds)	15
Flatness & Straightness (µm)	7
Fundamental Motor Constant (130°C)	10N / √Watt
Motor Force Constant (N/A)	26.7
Back-emf Constant (V/m/s)	21.8
Coil Resistance @ 25°C (Ohm)	3.2
Coil Inductance (mH)	9.1
Continuous Current (130°C, Amps)	2.1
Peak Current (A)	7.9
Continuous Force @ 130°C (N)	57
Peak Force (N)	170
Continuous Power Rating (W)	30
Thermal Resistance (°C/W)	3.5

¹ Please contact our Applications Engineers for loads exceeding 75kg.
Note: Maximum speed and velocity is load and encoder dependent.

For Further Information Contact

Heason Technologies Group Ltd

Tel: +44(0)1403 755800

Fax: +44(0)1403 755810

Email: sales@heason.com

Freephone 0800 374903 www.heason.com



<http://www.danahermotion.com/>