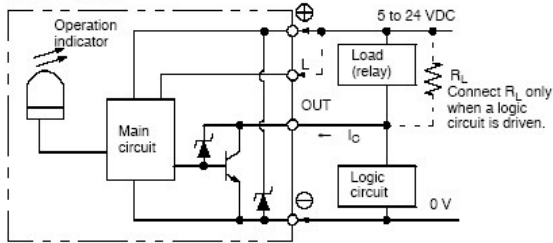


URS33, URS46, and URS55 Photoelectric Position Sensors

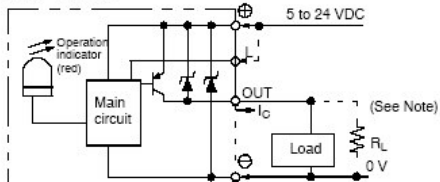
INTERNAL/EXTERNAL CIRCUIT DIAGRAM

Light-ON/Dark-ON

NPN Output



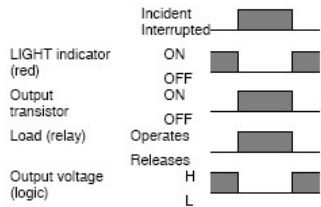
PNP Output



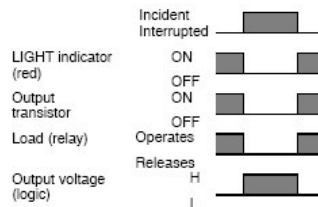
Note: When using a voltage output, always insert a resistor in R_L .

TIMING CHART

Light-ON



Dark-ON



For Further Information Contact

Heason Technologies Group Ltd

Tel: +44(0)1403 755800

Fax: +44(0)1403 755810

Email: sales@heason.com

Freephone 0800 374903 www.heason.com

Heason
Technologies Group