



Protective Bellows



2RB / 2RE Protective Bellows

2HB / 2HE Protective Bellows

2DB Protective Bellows

2EB Protective Bellows

MS25 / MS33 Protective Bellows

For Further Information Contact

Heason Technologies Group Ltd

Tel: +44(0)1403 755800

Fax: +44(0)1403 755810

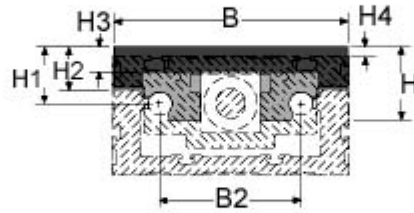
Email: sales@heason.com

Freephone 0800 374903 www.heason.com

Heason
Technologies Group

2RB / 2RE Protective Bellows

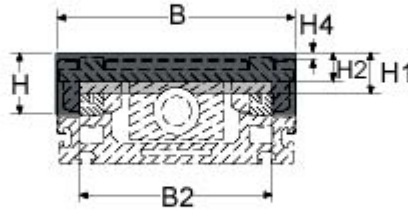
Dimensions



Part Number	Shaft Dia	H	H1	H2	H3	H4	B	B2
BEL-2R-12	12	48	37	29	15	12	128	75
BEL-2R-16	16	52	426	30	150	10	158	95

2HB / 2HE Protective Bellows

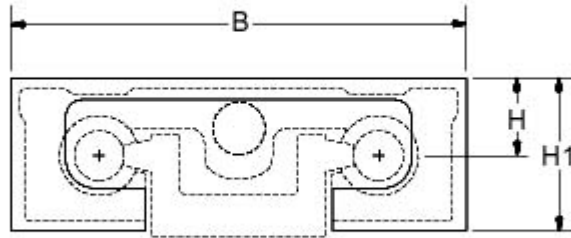
Dimensions



System	Sys Size	H	H1	H2	H4	B	B2
BEL-2H-10	10	26	11	10	0	103	81
BEL-2H-20	20	48	30	15	5	199	167

2DB Protective Bellows

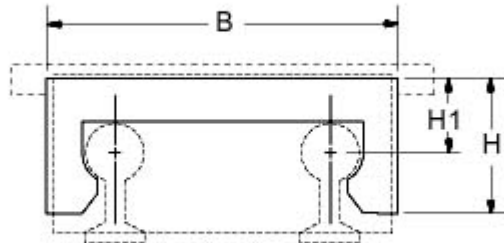
Dimensions



System	Shaft Dia	H	H1	B
2DB12	0.75	2.4	1.437	6
2DB16	1	2.9	1.687	7.5
2DB08	0.5	1.9	1.34	5.13

2EB Protective Bellows

Dimensions

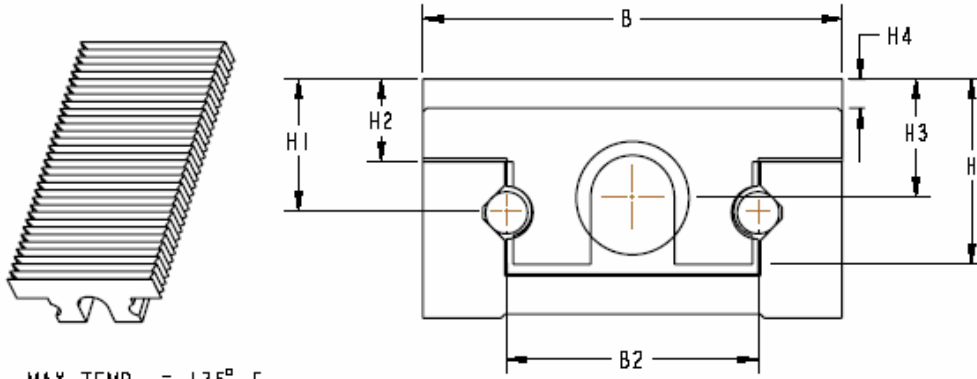


System	Shaft Dia	H	H1	B
2EB08	0.5	1.4	1.24	5.25
2EB12	0.75	2.1	1.35	6.85
2EB16	1	2.8	1.68	8.1
2EB24	1.5	4.2	2.44	11.18

MS25 / MS33 Protective Bellows

BEL-MS 33/25

FOR MICROSTAGE SYSTEMS MS 33/25



MAX TEMP. = 175° F

BEL-MS MOVEABLE PROTECTIVE BELLOWS								
PART NUMBER	NOM. SHAFT DIA.	DIMENSION (MM)						
		B	B2	H	H1	H2	H3	H4
BELMS33L	8	60	39.5	25.5	18.4	10	15	3
BELMS25L	5	50	30	22.1	16.5	10	14.75	4